



**LANTERN
THEATER
COMPANY**

THE GOVERNMENT INSPECTOR

November 21-December 28, 2008

LANTERN THEATER COMPANY AT ST. STEPHEN'S THEATER
10th and Ludlow Philadelphia PA 215.829.0395 www.lanterntheater.org

LANTERN STAFF

Artistic Director Charles McMahon
Managing Director Karyn B. Lyman
Development Director Theodora W. Ashmead
Marketing Director Leigh Goldenberg
Production Manager Janet Embree
Literary Manager Kathryn MacMillan
Education Director George Sedgwick
Box Office Manager Amy Chmielewski
House Manager Cheryl Balas
Graphic Designer Allan Espiritu
Web Design Anne Shuff
 @ MindLabs.net

LANTERN BOARD

Stacy Dutton, *President*
 Michael H. Rosenthal, Esq., *Vice President*
 Anne Shuff, *Treasurer*
 Frank A. Dante, Esq., *Secretary*
 Michael Brophy
 Mary Jo Coll
 Angela H. D'Amato, Esq.
 Cristian David
 Jay L. Goldberg, Esq.
 Philip Hawkins
 Lucille Larkin
 Karyn B. Lyman
 Charles McMahon
 Stephen P. Rush

PLANNING YOUR VISIT

BOX OFFICE HOURS

The Lantern box office is open Monday through Friday from 10am-6pm and Saturdays from 12pm-6pm during performance weeks. As always, the box office will be open one hour prior to curtain on any performance day.

LATE SEATING

It is often not possible to seat late patrons in the orchestra once a performance has begun. It is distracting both to the performers on stage and the audience enjoying the show. If you arrive late, the Lantern ushers will seat you in the first available seat in the balcony. You may relocate to an available orchestra seat at intermission.

CELL PHONES

Please kindly turn off and put away all cell phones, pagers and watch alarms prior to entering the theater so as not to disturb the performance with unnecessary lights and sound.

RECORDINGS

The taking of photographs or recordings of any kind is strictly prohibited.

CONTACT US

Lantern Theater Company
 PO Box 53428
 Philadelphia, PA 19105

Box Office: 215.829.0395

Administration: 215.829.9002

Fax: 215.829.1161

Email: email@lanterntheater.org

www.lanterntheater.org



THE GOVERNMENT INSPECTOR

by Nikolai Gogol

Translated by Armina LaManna

Adapted by Armina LaManna and David O'Connor

Directed by David O'Connor

with

David Ingram*

Anthony Lawton*

Seth Reichgott*

Sarah Sanford

Luigi Sottile

**Member of Actors' Equity Association*

Meghan Jones
Scenic Designer

Millie Hiibel
**Costume and Puppet
Designer**

Janet Embree
Lighting Designer

Jeff Lorenz
**Original Composition
and Sound Designer**

Sarah Sanford
Movement Consultant

Kathryn MacMillan
Dramaturg

Rebecca Smith*
Stage Manager

THE COMPANY

Judge, Osip

David Ingram

*The Hospital Director,
Bobchinsky, Dobchinsky*

Anthony Lawton

Mayor

Seth Reichgott

*School Director,
Anna, Marya, Servant*

Sarah Sanford

Postmaster, Khlestakov

Luigi Sottile

THE SETTING

Some little town in Russia,
during the rule of Tsar Nicholas I, c.1840

The Government Inspector is performed with one ten-minute intermission.

A WORD OF ADVICE

I want to warn you. Don't look now, but there is someone very important in the audience today. He is here to make sure everyone is well behaved, so please make sure that you look presentable, and that you don't make too much noise during the performance, otherwise he may call someone even more important than him and report you. You don't want anything you do today to show up on your permanent record, do you? It might affect you getting a job, or getting into school.

He has a list of everyone at the show today, which we tried not to give him, but you know how these things go. So please, for your own sake, be on your best behavior.

How can you spot this person? Well, he is very important, like I said. Look for an air of importance. Also expensive clothes are usually a tip off. He will try to blend in, but will never dress too far down. After all, what if someone is checking up on him? Also, he probably looks pretty smart. Or pretty tall. He had to be at least one of those things to get this job. Probably both. And definitely look for someone who is watching when everyone is laughing, making note of who is laughing at what jokes.

Here's a good idea: If you are with a child, ask them to look.

Children are great at picking out people like this. Just be sure they don't point and say something out loud, as children often do, otherwise you will lose the upper hand. You need to know who he is, but don't let him know you are onto him. That way, after the show, if you think you have been behaving badly, you can walk up to this person, and compliment his clothes, or his intelligent looks and/or height, or even offer a gift of some sort to make sure he is not disappointed in you. That would be a good idea.

So enjoy the show. But be alert. You'll thank me later.

The Director
David O'Connor

IN CONVERSATION: AUDIENCE ENRICHMENT SERIES

This series offers audiences an insider's look at each show of the season from the Lantern's artistic team, joined by some of the finest humanities scholars on the East Coast.

SCHOLARS: IN CONVERSATION Suggested donation \$5

Monday, November 24 at 7pm

Discussion with Wine and Cheese Reception

The Translator's Task: Russian Comedy for an American Audience

This lively panel discussion will address the challenges of bringing Gogol's 19th century satire to modern Philadelphia audiences. Featuring Kevin M.F. Platt, PhD, Chair of the Slavic Department at the University of Pennsylvania and Armina La-Manna, MFA, translator of the Lantern's all-new adaptation of *The Government Inspector*.

DIRECTORS: IN CONVERSATION Free for all ticket holders

Friday, November 28 at 7pm, before the 8pm performance

Kathryn MacMillan, the Lantern's Literary Manager, hosts a pre-show conversation with *The Government Inspector's* Assistant Directors, Jessica Dal Canton and M. Craig Getting to provide a first-hand look into the rehearsal process.

ARTISTS: IN CONVERSATION Free for all ticket holders

Saturday, December 13 following the 2pm performance

This post-show discussion focuses on the process of bringing scripts to the stage. Audiences will have an opportunity to talk about the production they've just seen with the director, performers, and designers who created it.

IN CONVERSATION BLOG

www.lanterntheater.org/inconversation

Visit us online as we share backstage stories, dramaturgical history, topical news items and more! We invite your feedback and encourage you to open the dialogue with your fellow audience members.

PRE-CURTAIN COCKTAILS

Friday, December 5

Cocktails from 6pm-8pm, Performance at 8pm

Meet and mingle with other Lantern theatergoers before the show! On select Friday evenings, join us at Marathon Grill, 10th & Walnut Streets, as we host Philadelphia professionals for drinks and light fare. Happy hour specials and complimentary appetizers will be provided.



NEW THIS SEASON!

CITIZEN KIDS: A SPECIAL SECTION FOR YOUNG AUDIENCES (and the young at heart)

Cast members Sarah and Anthony talk about what they're learning from *The Government Inspector* and what you should look for when you watch the play!

What does your character teach us about good government?

SARAH: I have four characters, and I don't think any of them have much good to teach. These characters teach not by demonstrating what you should do, but what you **SHOULDN'T** do - and how you **SHOULDN'T** behave! They're cowards, brown-nosers, and liars.

ANTHONY: No one in this play knows the first thing about good government!

What does your character teach us about bad governing?

ANTHONY: Now you're talking! The authorities in this play have an ingrained habit of doing everything possible to make things easier on themselves -- everything except their sworn duties. As a consequence, they make everything a lot harder on themselves, and on everyone else.

What is the most fun thing you do in the play?

SARAH: Playing Anna with the Marya puppet.

What is the most challenging thing you do in the play?

SARAH: Playing Anna with the Marya puppet.



Marya and Anna puppet sketches by Millie Hiibel

How do the production elements (costumes, set, lights, and sound) help you as an actor, if at all?

ANTHONY: Costumes, especially, alter the shape of the body and the way actors move - this design element plays a huge role in informing character.

SARAH: Costumes help define a character by giving him or her a certain walk, a certain "attitude," a certain presence. Costuming can also be a great way into discovering how a character feels about himself or herself. If you realize how much time you put into figuring out what to wear and then you think, "My character chose to put this on this morning," you can get an idea of how they wish to present themselves to the world.

What is one funny moment we should look out for - without giving too much away?

ANTHONY: There may be some farting.

What can plays teach us about government and citizenship?

SARAH: Plays show what happens when people make certain choices.

ANTHONY: Plays reinforce the idea that all choices and actions have consequences.

SARAH: Plays don't deny the complexity of living in the world - they embrace it. Plays remind us that communication is still possible, that laughter is essential to go on living, and that our imaginations are our most powerful tools.



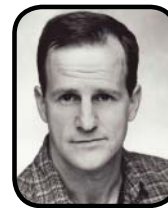
Bobchinsky/Dobchinsky costume sketch by Millie Hiibel



WHO'S WHO



DAVID INGRAM (*Judge, Osip*) is thrilled to be making his Lantern Theater Company debut. David is a member at Peoples Light and Theater Company, where he was last seen in *I Have Before Me a Remarkable Document Given to Me by a Young Lady from Rwanda*. Previous Peoples Light credits include *Tuesdays with Morrie*, *A Flea in Her Ear*, *Once in a Lifetime*, *Midons*, and many others. Also at Peoples Light, he directed *The Foreigner* and *July 7, 1994*. He has also appeared at the Arden Theater, Interact, Philadelphia Shakespeare Festival and the Wilma Theater. He is on the theater faculty at Temple University.



ANTHONY LAWTON (*Hospital Director, Bobchinsky, Dobchinsky*) has been acting in Philadelphia for sixteen years, and *The Government Inspector* is his fourteenth show at the Lantern. Other highlights here include the roles of Feste in *Twelfth Night* and Austin in *True West*, plus his solo shows: C.S. Lewis' *The Great Divorce* and *The Screwtape Letters*. The Lantern also produced his original play, *The Fooey*, which received five Barrymore nominations, including one for Best New Play. He has also performed at the Wilma, the Arden and the Walnut Street Theatres, among other regional theatres. TV: *Hack* and *Cold Case*. Film: *Unbreakable* and *Invincible*. Love to Declan.



SETH REICHGOTT (*Mayor*) is pleased to be back at the Lantern, where he was last seen in *Othello*. A Philadelphia-based actor, director, and writer, Seth has worked with InterAct, the Walnut, the Arden, the Wilma, Cape May Stage, and Mum Puppettheatre, among others. He has twice been a co-recipient of the Barrymore Award for Outstanding Ensemble. When not on the Philadelphia stage, Seth tours his solo Greek mythology show, *Chariot of the Sun*, to elementary and middle schools each year in Pennsylvania, New Jersey, and Maryland. Seth is an associate member of the Bloomsburg Theatre Ensemble and a graduate of Wesleyan University and the Dell'Arte International School of Physical Theatre. For more, visit www.sethreichgott.com.



SARAH SANFORD (*School Director, Anna, Marya, Servant, Movement Consultant*) is thrilled to return to the Lantern where she has appeared in *La Ronde* and *Othello*. A finalist for this year's F. Otto Haas Award, Sarah is a member of Pig Iron and has co-created/performed in six company works including Obie Award-winning *Hell Meets Henry Halfway* - performing at Washington D.C.'s Woolly Mammoth Theatre in Feb. 2009. Recent acting credits include *The European Lesson* at the Philadelphia Live Arts Festival, the Wilma Theater (*The Life of Galileo*), and BRAT Productions (*The 24-Hour Bald Soprano*). Upcoming: Mauckingbird's *Hedda Gabler*, Pig Iron's *Welcome to Yuba City*, and Sarah's directing debut - an original dance theatre work entitled *Appetite*.

WHO'S WHO



LUIGI SOTTILE (*Postmaster, Khlestakov*) is very excited to be working at the Lantern with such a great cast on such a wonderful show. Luigi was previously seen at the Lantern in *The*

Hothouse (Lush), *Othello* (Cassio), *The School for Wives* (Horace / Chrysalde), and *The Lonesome West* (Father Welsh). He would like to thank David O'Connor and everyone at the Lantern for their support. Love to my family.

NIKOLAI VASILEVICH GOGOL (*Playwright*) is widely considered one of the most important Russian writers of the 19th century, a great satirist of Russian politics and human folly. He was born in a village in what is now the Ukraine, a son of an amateur playwright who died when Gogol was a teen.

As a young man, Gogol took up residence in St. Petersburg. For a short time he held a minor official position, and a little later was professor of history, an occupation for which he was admittedly unqualified. Meanwhile he honed his skills as a writer and his short stories of farm life in the Ukraine attracted considerable attention among literary circles in the capital.

In 1831, Gogol had the good fortune to befriend the great poet Pushkin, which gave him a valuable introduction into St. Petersburg literary circles. It was Pushkin who suggested to him the subjects for two of his most famous works, *The Government Inspector* (1836) and *Dead Souls* (1842). Of his many lauded short stories, the most famous is *The Overcoat* (1842).

From 1836 to his death in 1852, Gogol lived mainly abroad and spent much time traveling. His final years were marred by illness and depression. He died in Moscow in February, 1852.

ARMINA LaMANN (*Translator, Co-Adaptor*) Directing credits: *Pushkin at Boldino, The Zoo Story, Hello Out There, A Lie of the Mind, Little Armenia, An Ideal Husband, A Marriage Proposal, Silenced* and *Heart in the Ground*; also *Three Simple Words* for PYPF. Other credits: *P.L.A.Y., Middle Passage, Circumference of a Squirrel* at the Mark Taper Forum's New Work Festival. Stage managing credits at InterAct Theatre (Phila), the Colony Theatre, the Fountain Theatre, Groundlings 30th Anniversary at the Henry Fonda Theatre, the Los Angeles Repertory Co., the Interact Theatre (Los Angeles), the Grove Theatre Center, the Great American Playwriting Series, and the Pasadena Shakespeare Co. Armina's writing and translation credits: *Pushkin at Boldino* and Chekhov's *The Cherry Orchard*. Education: M.F.A. in Directing (TEMPLE'09); B.A. in Directing (CSUF), Russian Theatre Arts Academy (Russia), and Musical Theatre Academy (USSR).

DAVID O'CONNOR (*Director, Co-Adaptor*) is happy to be home at the Lantern. Here David has directed *The Lonesome West* and "*Master Harold*"...and the boys (Barrymore Nomination). He also designed lights for *QED* and *Skylight* (Barrymore nomination). Upcoming projects include *Arms and the Man* at Hedgerow, *Melancholy: A Comedy* with solo theatre artist Sara Felder, and *The Seafarer* at Arden Theatre Company. David received his MFA from Temple University. Special thanks to this outstanding cast. Cheers to Charles and everyone at the Lantern. Love as always to Karyn.

WHO'S WHO

MEGHAN JONES (*Scenic Designer*) is now in her third season with the Lantern. Previous designs include *The Hothouse, Othello, The Lonesome West, La Ronde*, and "*Master Harold*"...and the boys. She is also continuing as Technical Director for a third season. Her MFA is in Scenic Design from Temple University with past designs for *Company* and *Taking Steps*. Other area productions include *User 927* with BRAT Productions, *Greater Tuna* and *Vivien* with Walnut St. Theatre on Studio 3. Upcoming designs in the area: *Sizwe Bansi is Dead* at the Lantern, and *Tuna Christmas* at Walnut St. Theatre on Studio 3. She is looking forward to a successful production and season. Many thanks.

MILLIE HIBEL (*Costume and Puppet Designer*) is thrilled to be back at the Lantern where she recently designed costumes for *Othello, Skylight, The School for Wives* and *The Lonesome West*. Her Lantern designs for *La Ronde* and *The Comedy of Errors* received 2007 and 2004 Barrymore Nominations for Excellence in Theater, respectively. As a Philadelphia based costume designer, Millie has designed off-Broadway (*I Love You Because*), regionally, and for most Philadelphia theater companies including the Wilma, Theatre Exile, 1812 Productions, and Delaware Theater Company. Other recent designs include *Monster* (Luna Theater Company), *Stones in his Pockets* (Act II Playhouse), *CAR* (Anonymous Bodies), *Hedwig and the Angry Inch* (Azuka), and *The Merchant of Venice* (Temple Theaters). She was a 2007 F. Otto Haas finalist for Emerging Philadelphia Theatre Artist, and a 2005 Independence Foundation Fellow, for which she attended an intensive puppet workshop/performance in Prague. As an educator, she currently teaches at Moore College of Art and Design and Arden Drama School. She has also taught and designed at Temple University, University of the Arts, Drexel University, and Arcadia University; and has lectured and held workshops for The Costume Society of America and USITT. MFA: Temple University. Love to her fluffy Darlings.

JANET EMBREE (*Lighting Designer*) has been with the Lantern for eleven out of our fifteen seasons and has designed for 36 Lantern shows. She has also designed lights and costumes for many other area theaters including 1812 Productions, InterAct Theatre, Freedom Theater, Walnut Studio, Act II Playhouse, Bristol Riverside Theater and University of the Arts. She is married to set designer Nick Embree and teaches at University of the Arts. Janet is proud to see her students out working professionally!

JEFF LORENZ (*Original Composition and Sound Design*) returns to the Lantern after designing last season's *Skylight*. Jeff tours internationally as sound designer/composer for SaBooge Theatre (Montreal/NYC). Nominations include a 2005 Drama Desk Award (The Flying Machine's *Frankenstein* at SoHo Rep), 2006 New York Innovative Theatre Award (Vampire Cowboys) and 2007 & 2008 Montreal English Critics' Circle Award (SaBooge's *Every Day Above Ground* and *Speak Easy*). He is co-recipient of Best Production 2005 at Dublin Fringe Festival for SaBooge's *Fathom*, and an Overall Production & Technical Achievement Citation from Talkin' Broadway. Jeff is currently providing location sound/score for a documentary on Vietnam War reenactors. He is a multi-instrumentalist and plays therein for NYC's The Pizzas.

REBECCA SMITH (*Stage Manager*) is pleased to be working with Lantern Theater Company and such a talented group of people. She recently graduated from Temple University with a Bachelor's in European Military History and a Minor in Theater. She has worked with other companies such as Brat, Kaibutsu, as well as the Lantern and is a proud new member of Actors' Equity. A big thank you to David for his continued support.

*Assistant Directors**Assistant Stage Manager**Technical Director**Master Carpenter**Scenic Charge Painter**Master Electrician**Assistant Costume Designers**Carpenter**Electrician**Cutter/Draper**Stitchers**Run Crew**Production Interns**Administrative Interns*

Jessica Dal Canton,

M. Craig Getting

Katie Driscoll

Meghan Jones

Lance Kniskern

Kate Coots

Chris Hetherington

Alana Staiti, Alison Johnson

Luigi Sottile

Chris Michaels, Carlos Fried

Emily Leclau

Adrienne Clark, Allison Hoban,

Helen McMahon, Jessica Reed

M. Craig Getting

Lauren Bohy, Emily Mineo

Colleen Sawyer, Alyse Trujillo

Sheila Egan Addis, Regina Raiford Babcock,

Ava Baran, Iris McKinney, Meredith Rich,

Chelsea Sanz, Alyse Trujillo

**PRODUCTION
TEAM**

Mary and Bonatso's Florist, Marathon Grill, Sara Merriman, Glen Sears and the Walnut Street Theater Scene Shop, Gayle Smith, Clayton Tejada and the Wilma Theater, Temple University Theater Costume Shop, Philadelphia Theatre Initiative, University of the Arts

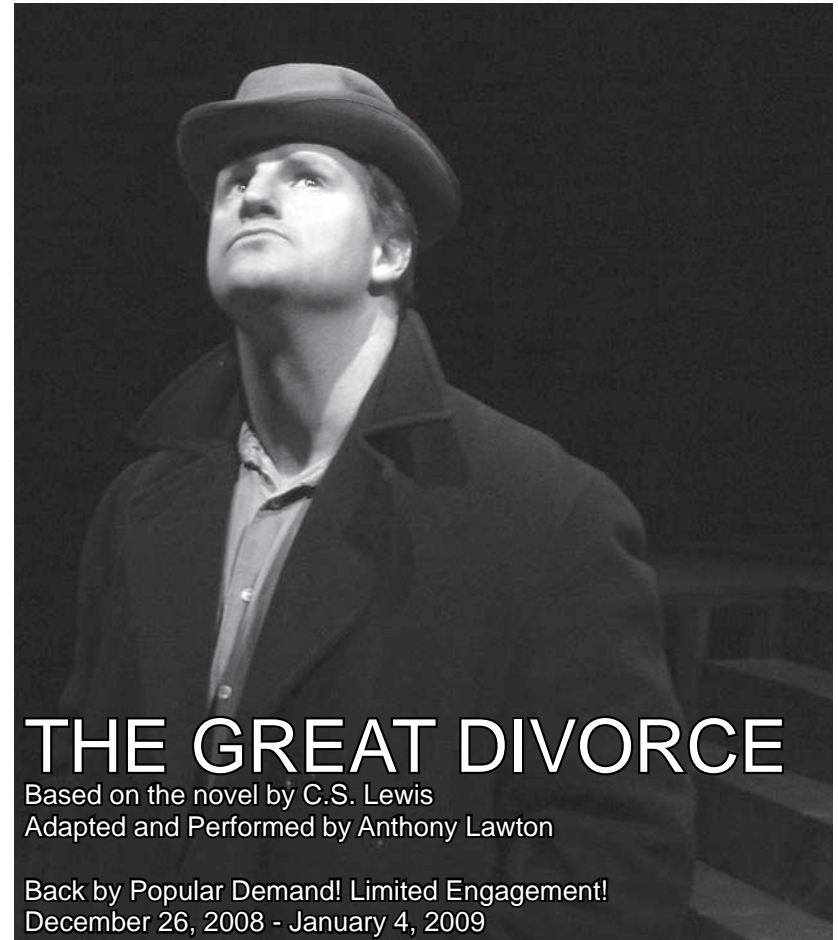
**SPECIAL
THANKS****AFFILIATIONS
AND
MEMBERSHIPS**

Lantern Theater Company proudly participates in the Barrymore Awards for Excellence in Theatre, a program of the Theatre Alliance of Greater Philadelphia.



ACTORS' EQUITY ASSOCIATION (AEA) was founded in 1913 as the first of the American actor unions. Equity's mission is to advance, promote and foster the art of live theatre as an essential component of our society. Today, Equity represents more than 40,000 actors, singers, dancers and stage managers working in hundreds of theatres across the

United States. Equity members are dedicated to working in the theatre as a profession, upholding the highest artistic standards. Equity negotiates wages and working conditions and provides a wide range of benefits including health and pension plans for its members. Through its agreement with Equity, the theatre has committed to the fair treatment of the actors and stage managers employed in this production. AEA is a member of the AFL-CIO and is affiliated with FIA, an international organization of performing arts unions. For more information, visit www.actorsequity.org.

**THE GREAT DIVORCE**

Based on the novel by C.S. Lewis

Adapted and Performed by Anthony Lawton

Back by Popular Demand! Limited Engagement!

December 26, 2008 - January 4, 2009

"Now *this* is storytelling. *The Great Divorce* is a show for the new year."
-Philadelphia Inquirer

Lewis' own favorite among his works, *The Great Divorce* is the story of Clive, a hapless professor, and the motley band of malcontents who join him on a very curious bus ride. Journeying between Hell and Heaven, Clive crosses a surprising, wildly inventive landscape drawn by Lewis' philosophical imagination. Satirical and comic, *The Great Divorce* is a wondrous ride filled with dazzling insight and language.

Tickets: \$40**Subscribers and Groups of 10 or more: \$35****Order today at 215-829-0395 or www.lanterntheater.org**

SIZWE BANSI IS DEAD

By Athol Fugard, John Kani and
Winston Ntshona
Directed by Peter DeLaurier

Featuring Frank X and
Forrest McClendon

January 30 - March 1, 2009

From South Africa's most celebrated playwright comes a drama as powerful today as in its first performance 35 years ago. Styles, an enterprising photographer, has a small storefront in a Port Elizabeth township.

When Sizwe, a migrant worker, comes in to have his picture taken, the two explore issues of image and identity under South Africa's oppressive regime. Both soaring and personal, the play's attack on the dehumanizing laws of the apartheid era resonates with surprising humor and uplifting faith in the human spirit.

HAMILET

By William Shakespeare
Directed by Charles McMahon

Featuring Dallas Drummond, Melissa Dunphy, Joe Guzmán, Dan Hodge, Andrew Kane, Mary Martello, Tim Moyer and Geoff Sobelle

April 3 - May 10, 2009

The theater company who has brought you Philadelphia's best Shakespeare now brings you his most famous play! Nationally-acclaimed Philadelphia-based performer Geoff Sobelle takes on the lead role, bringing his dynamic energy to a searing production that plumbs the dark humor of Shakespeare's tragic son.

Subscribe and Save!

Turn in your ticket stub from today's performance of *The Government Inspector* and receive a discount on a 3-play subscription! Starting at just \$54, a subscription provides these exclusive benefits:

- Subscriber rate for *The Great Divorce*
- Discounted guest tickets
- Unlimited ticket exchanges
- Discounts at our area Business and Dining Partners

Call our Box Office at 215-829-0395 to purchase your subscription today!

Save the Date!
Lantern Theater Company's
Spring Soiree
Friday, March 6, 2009

Benefit Co-Chairs:
Moirá Mulroneý, Gretchen Roede,
Nina Rosenthal and Sarah Weinstein



Melanie Tambolas, Elizabeth Perri, Cristian David,
Sarah Weinstein and Adam Weinstein

To join the Benefit Committee or find out more about the event,
please call the Development Office at 215-829-9002 x 102



Ellen Mulroneý, Karyn B. Lyman
and Mary Jo Coll



Clarisse Carnell, Hal Jones, Charles McMahon,
Nina Rosenthal and Mallory Zakeosian

Photos by Jeffrey Stockbridge from the 2007 Spring Soiree at The Oceanaire Seafood Room

We want to thank these individuals who have graciously hosted events and parties for the Lantern:

Kathy and Gary Anderson
Theodora Ashmead, Deb Miller and Ray Costello
Stacy Dutton
Maxine and Jay Goldberg, Esq.
Laurel Grady
Eileen and David Murphy
Tricia O'Halloran
Gayle and David Smith

Please contact Charles McMahon, cmcmahon@lanterntheater.org, or Karyn Lyman, klyman@lanterntheater.org, if you would like to host a party at your house, place of business or favorite restaurant. Parties and events help encourage new friends to the Lantern.

We appreciate your support!

Support the Lantern as we celebrate our 15th Anniversary Season!



- \$150 funds one week of one actor's health plan
- \$1,500 funds a teaching artist in a school for 12 classes
- \$15,000 will fund essential operating needs for one month

A gift of any size allows Lantern Theater Company to reach 15,000 people and counting in our community.

ANNUAL APPEAL

Our Annual Appeal Campaign is in progress this fall; please be as generous as possible. Ticket income only provides 38% support of our general operations. The remainder we raise from contributed income to help us balance our budget. Thank you for your support!

WISH LIST

Lantern Theater Company also accepts in-kind gifts to support our operations. Our Wish List Includes:

- Office Desks and Tables
- Computers: Desktops and Laptops
- Hand and Power Tools
- Storage Space
- Host a party at your house, and welcome new friends to the theater.

MEET THE CHALLENGE

The Hassel Foundation has issued the Lantern a challenge grant for increased funding for essential educational programs with a grant of \$5,000. A new and increased grant from a corporation and/or foundation will count! The Lantern's education programs and outreach efforts in the schools, through the Barrymore nominated *Illumination* program, reach over 4,000 school children in the Philadelphia area. Thank you for your consideration and we look forward to meeting the Hassel Challenge.

You can make your donation in the lobby or by contacting Theodora W. Ashmead at 215-829-9002 x102 or tashmead@lanterntheater.org

To make your tax-deductible donation to Lantern Theater Company, contact the Development Office today or mail your donation to:

**Lantern Theater Company
PO Box 53428
Philadelphia, PA 19105**

The official registration and financial information of Lantern Theater Company may be obtained from the Pennsylvania Department of State by calling toll free, within Pennsylvania, 1-800-732-0999. Registration does not imply endorsement.

OUR DONORS

Lantern Theater Company gratefully acknowledges these government, foundation, corporate and individual contributors who support our work.

GOVERNMENT

National Endowment for the Arts
Pennsylvania Council on the Arts
Pennsylvania Department of Community and Economic Development, through State Senator Vincent J. Fumo
Pennsylvania Humanities Council
Philadelphia Cultural Fund

FOUNDATIONS

Barra Foundation
Stockton Rush Bartol Foundation
Charlotte Cushman Foundation
Samuel S. Fels Fund
Elsie Lee Garthwaite Memorial Foundation
Genuardi Family Foundation
Mary B. and Alvin P. Gutman Fund
Otto Haas Charitable Trust #2, as designated by Leonard C. Haas
Phoebe Haas Charitable Trust A, as designated by Carole Haas Gravagno
The Hassel Foundation
Hirsig Family Fund
Independence Foundation
Virginia and Harvey Kimmel Arts Education Fund
John S. and James L. Knight Foundation Fund
Lida Foundation
Christopher Ludwick Foundation
Leo Model Foundation
William Penn Foundation
Rittenhouse Foundation
Suzanne Roberts Cultural Development Fund
Seybert Institution
Shubert Foundation
Maxwell Strawbridge Trust
Union Benevolent Association

Please consider supporting Lantern Theater Company in one of the following ways:
Cash Gifts
Stock Gifts
Sponsorship
In-Kind Support
Planned Giving

CORPORATIONS

Anonymous (1)
Berwind Corporation
Comcast, as designated by Mary Jo Coll
Lincoln Financial Group Foundation
PNC Bank Foundation

MATCHING CORPORATE AND FOUNDATION GIFTS

Cardinal Health
Exxon Mobil Foundation
Merck Partnership for Giving
Philadelphia Foundation
William Penn Foundation

IN-KIND DONATIONS

Arts & Business Council of Greater Philadelphia
Board Net USA
Bonatsos Florist
Annette DiPietrae
Stacy Dutton
Leadership Philadelphia
Deb Miller and Ray Costello
Marathon Grill
Eileen and David Murphy
The Oceanaire Seafood Room
Gayle and David Smith
Starbucks
UWSEPA
Whole Foods Market

THE HOTHOUSE FUND

Anonymous (1)
Abigail K. Anderson
Colleen and Kevin Dewan
Claire and John Labbe
Karen Lange
Martha J. Miller
John Nocero
Arnita Phillips
Gina and Mike Svarovsky

Lantern Theater Company thanks our donors who help us fulfill our mission and serve our community. Due to space limitations, donations from individuals at \$100 and more are listed. The following donations were made between March 1 and November 1, 2008. If you notice any errors and omissions please accept our apologies and contact Theodora W. Ashmead at 215-829-9002 x102, email tashmead@lanterntheater.org.

SPOTLIGHT SOCIETY

(\$1,000+)

Welcome to our New Members!

Dr. Nathan and Dolly Beechman-Schnall
Lou Bluver
Ellen and Michael Mulrone
Gayle and David Smith
Jeanne Wroblewski, Esq.

Welcome Back to our Recently Renewed Members!

James and Kay Gately
Jay L. Goldberg, Esq.
Lucille Larkin
Peter and Lucy Bell Sellers

Thank you to our Founding Members:

Anonymous (1)
Theodora Ashmead
Angela Branham-Britt
Mary Jo Coll
Nicholas Constan
Angela H. D'Amato, Esq.
Frank A. Dante, Esq.
James and Kay Gately
Jay L. Goldberg, Esq.
Carole Haas Gravagno
John and Chara Haas
Lenny Haas
Joanne Harmelin
Gretchen Hartling
Frederick Heldring
Donna Hill, Esq.
Al and Nancy Hirsig
William Kiernan
Harvey and Virginia Kimmel
Kate Kinslow
Josephine Klein
Lucille Larkin
Ann Liacouras
Professor Charles and Helen McMahan
Josh Mitteldorf
Eileen and David Murphy
Michael H. Rosenthal, Esq.
Stephen Rush
Peter and Lucy Bell Sellers
Anne Shuff
Ted and Stevie Wolf

TORCHES (\$500-\$999)

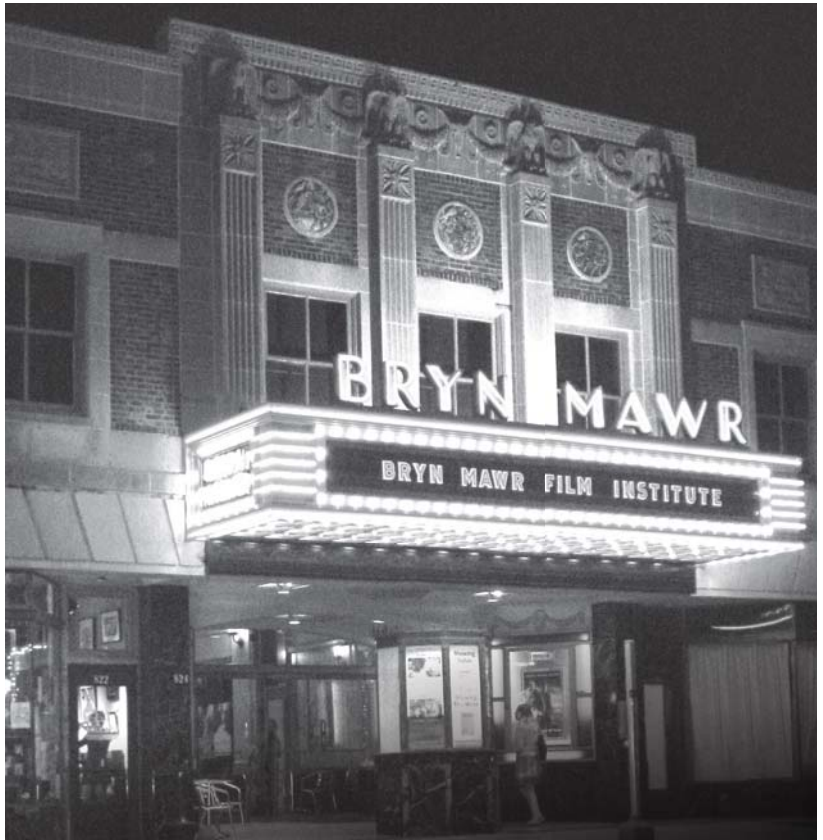
Sandra and Hugh Janney
William Loeb

FLARES (\$250-\$499)

Robert and Christine Andres
Joan Coale
Ellen Heber
Gerry Rigby
John Shellenberger
Robert Brown - Signature Communications
Sarah and Adam Weinstein

CANDLES (\$100-\$249)

John Attanasio
Marsha Bailey
Bruce and Barbara Byrne
Joseph Clark
Edwin G. Close III and
Anthony Wade Close
Rebecca and Bruce Conrad
Kathie and Stewart Dalzell
Ann and Frank Dougherty
William and Maureen Eberle
Robert C. and Sue Evans
Marvin and Judith Garfinkel
Elizabeth Gemmill
Louis and Catherine Girifalco
Madge Goldman
Alison and Charles Graham
Marcia Harwitz
Dianne and John Heard
Robert and Esther Hornik
Edward Jakmauh
Gregory and Chela Kleiber
Christina Kopp and Ivory Hills
Rosalie Matzkin
Jeannine and George McLaughlin
Deb Miller and Ray Costello
Lillian and Daniel O'Brien
Barbara and Arthur Oldenhoff
Robert Peck
Steven Peitzman
Laurence and Mary Pethick
Rhoda Polakoff
Mary-Anne and Kurt Reiss
Robert and Gail Richardson
Faye and Daniel Ross
Alan Sandman and John Pcsolar
James L. Smith
Walter Vail
Lee Van de Velde
Vaclav Vitek
Barbara and Peter Westergaard
Lorle and Bertram Wolfson



Add the glamour of Hollywood by hosting your next event at Bryn Mawr Film Institute

Whether you screen a film in one of our two theaters or host a corporate or private event in our stunning Multimedia Room, your experience at Bryn Mawr Film Institute will be memorable and effortless. Mention Lantern Theater Company and receive 10% off of your first rental.

Contact Lisa Burns, Marketing Manager, at 610.527.4008 ext. 108 or LBurns@BrynMawrFilm.org for more information.

**Serving the
neighborhood.**



MARATHON

PROUD SPONSOR OF LANTERN THEATER COMPANY

10TH + WALNUT
215.733.0311
MARATHONGRILL.COM

MHR

EXECUTIVE ADVOCACY
EMPLOYMENT LITIGATION
BUSINESS LITIGATION

*"AND DO AS
ADVERSARIES DO IN
LAW,
STRIVE MIGHTILY, BUT
EAT AND DRINK AS
FRIENDS."*

TAMING OF THE SHREW,
ACT I, SCENE 2.

MICHAEL H. ROSENTHAL
ATTORNEY AT LAW
TWO PENN CENTER, SUITE 1230
PHILADELPHIA, PA 19102
T: 215.496.9404
MICHAEL@MICHAELHROSENTHAL.COM

WWW.MICHAELHROSENTHAL.COM

In 1994, Lantern Theater Company began with a mission of bringing the best texts in dramatic literature to life and an abiding faith in Philadelphia's potential to become America's next great theater town.

**Thank you, Lantern for
15 years of great theater....
Here's to the next 15!**

Lucille Larkin

Realtor

lucille.larkin@prufoxroach.com
610.405.0400



Prudential

Fox & Roach,
REALTORS®

Salute the Lantern's 15th Season while reaching over 5,000 patrons.

Place your advertisement in the an upcoming program!

YOUR AD HERE

We offer reasonable rates for 1/4 page, 1/2 page and full page ads.

For more information, or to secure your spot in our program, contact:
Leigh Goldenberg
215.829.9002 x106
lgoldenberg@lanterntheater.org



TA
THEATRE ALLIANCE
OF GREATER PHILADELPHIA

ON STAGE November/December 2008

She Loves You

Society Hill Playhouse
9/24/2008 - 12/31/2008
(215) 923-0210

2008 New Voices: Workshop Productions of

Wimpy Student Plays
Philadelphia Young Playwrights
10/1/2008 - 5/31/2009
(215) 665-9226

*Gee's Bend**

Arden Theatre Company
10/9/2008 - 11/30/2008
(215) 922-1122

A Few Good Men

Players Club of Swarthmore Theater
10/16/2008 - 12/1/2008
(610) 328-4271

*Sherlock Holmes: The Final Adventure**

Hedgerow Theatre
10/17/2008 - 11/16/2008
(610) 565-4211

*The Music Man**

The New Candlelight Theatre
10/17/2008 - 12/23/2008
(302) 475-2313

*Magnetic North**

Act II Playhouse
10/21/2008 - 11/16/2008
(215) 654-0200

*Kiss Me Kate**

The Ritz Theatre Company
10/23/2008 - 11/22/2008
(856) 858-5230

Unusual Acts of Devotion

Philadelphia Theatre Company
10/24/2008 - 11/23/2008
(215) 985-0420

*The War Party**

InterAct Theatre Company
10/24/2008 - 11/23/2008
(215) 568-8079

*An Impending Rupture of the Belly**

Flashpoint Theatre Company
10/29/2008 - 11/22/2008
(215) 665-9720

*Talk Radio (Revised)**

New City Stage Company
11/5/2008 - 11/30/2008
(215) 563-7500

Talk Radio

Chapel Street Players
11/7/2008 - 11/22/2008
(302) 368-2248

Enchanted April

Old Academy Players
11/7/2008 - 11/23/2008
(215) 843-1109

*Anna Bolena**

The Academy of Vocal Arts
11/8/2008 - 11/28/2008
(215) 735-1685 x10

*Le Dindon (An Absolute Turkey)**

Villanova Theatre
11/11/2008 - 11/23/2008
(610) 519-7474

Absurd Person Singular

Bristol Riverside Theatre
11/11/2008 - 11/30/2008
(215) 785-0100

*The Last Night of Ballyhoo**

Montgomery Theater
11/13/2008 - 12/6/2008
(215) 723-9984

*dark play or stories for boys**

Theatre Exile
11/13/2008 - 12/7/2008
(215) 922-4462

*Incorruptible**

The Stagecrafters Theater
11/14/2008 - 11/30/2008
(215) 247-8881

*The Mystery Plays**

Philadelphia Theatre Workshop
11/15/2008 - 11/30/2008
(215) 316-1361

*Women on the Verge: Ibsen, Nora and Hedda**

Temple Theaters
11/19/2008 - 12/7/2008
(215) 204-1122

Blood Brothers

Drexel University
11/20/2008 - 11/23/2008
(215) 895-2787

*Cinderella**

People's Light & Theatre Company
11/21/2008 - 1/4/2009
(610) 644-3500

*The Government Inspector**

Lantern Theater Company
11/21/2008 - 12/28/2008
(215) 829-0395

*Mambo Italiano**

Allens Lane Theater
11/21/2008 - 12/6/2008
(215) 248-0546

Santaland Diaries

MacGuffin Theatre & Film Co.
11/21/2008 - 11/23/2008
(215) 922-1141

Trouble in Mind

The Drama Group
11/21/2008 - 12/6/2008
(215) 844-0724

A Tuna Christmas

Walnut Street Theatre
11/25/2008 - 1/4/2009
(215) 574-3550

The Little Prince

Players Club of Swarthmore Theater
11/28/2008 - 12/14/2008
(610) 328-4271

You're A Good Man Charlie Brown

Footlighters Theater
11/28/2008 - 12/14/2008
(610) 296-9245

*The Eight: Reindeer Monologues**

BCKSEET Productions
11/28/2008 - 12/31/2008
(215) 923-0210

'Twas the Night Before Christmas

Bridge Players Theatre Company
11/29/2008 - 12/6/2008
(856) 303-7620

*Look Mom, I'm Swell**

Act II Playhouse
12/3/2008 - 12/14/2008
(215) 654-0200

*Christmas City Follies IX**

Touchstone Theatre
12/3/2008 - 12/21/2008
(610) 867-1689

*Picasso at the Lapin Agile**

Delaware Theatre Company
12/3/2008 - 12/21/2008
(302) 594-1100

*Purchase Theatre Alliance gift certificates, accepted at over 50 theatres across the region!

For more information please visit WWW.THEATREALLIANCE.ORG



TA
THEATRE ALLIANCE
OF GREATER PHILADELPHIA

ON STAGE November/December 2008

*Oliver!**

The Media Theatre
12/3/2008 - 1/4/2009
(215) 546-0100

*Schmucks**

The Wilma Theater
12/3/2008 - 1/4/2009
(215) 546-7824

The Man Who Walked Between the Towers

Rowan University
12/4/2008 - 12/7/2008
(856) 256-4545

Little Women

University of the Arts
12/5/2008 - 12/13/2008
(215) 545-1664

*A Christmas Carol**

Hedgerow Theatre
12/5/2008 - 12/28/2008
(610) 565-4211

*The Snow Queen**

Enchantment Theatre Company
12/10/2008 - 1/4/2009
(215) 881-9899

*James and the Giant Peach**

Arden Theatre Company
12/10/2008 - 2/8/2009
(215) 922-1122

Winter Musicale 2008

Bristol Riverside Theatre
12/11/2008 - 12/21/2008
(215) 785-0100

*Cherry Bomb: The Worst Act in Vaudeville for the Holidays**

1812 Productions
12/11/2008 - 1/4/2009
(215) 592-9560

*A Christmas Carol**

Curio Theatre Company
12/11/2008 - 1/4/2009
(215) 525-1350

*Improv Comedy: The N Crowd**

The N Crowd
Every Friday Night
(215) 253-4276

For more information please visit WWW.THEATREALLIANCE.ORG



Bonatsos Flower Shop
133 South 10th St.
Philadelphia, PA 19107

Phone: 215-923-1330
Fax: 215-923-1332

Over 65 years of excellent service Flowers, Balloons, Fruit Baskets,
and Dish Gardens for all occasions

THE LANTERN PRODUCTION HISTORY

1994-1995

Waiting for Godot, by Samuel Beckett
Arms and the Man, by George Bernard Shaw

1995-1996

Waiting for Godot, by Samuel Beckett
The Playboy of the Western World,
by John Millington Synge
Love in Pieces - An Evening of One-Act Plays,
by Shaw, Chekhov, de Maupassant, Beckett

1996-1997

Long Day's Journey Into Night,
by Eugene O'Neill
All's Well that Ends Well,
by William Shakespeare
Rosencrantz and Guildenstern are Dead,
by Tom Stoppard

1997-1998

True West, by Sam Shepard
Ghosts, by Henrik Ibsen
The Steward of Christendom, by Sebastian Barry

1998-1999

Rough Crossing, by Tom Stoppard
Twelfth Night, by William Shakespeare
Opening Night, by Judi Barton
Year of the Woman, by Kate Walbert
An Airborne Life, from Beryl Markham
adapted by Sally Mercer
Lovers and Executioners, by John Strand

1999-2000

A Doll's House, by Henrik Ibsen
Beyond Therapy, by Christopher Durang
Betrayal, by Harold Pinter
The Bacchae, by Euripides

2000-2001

Year of the Woman, by Kate Walbert
The House of Bernarda Alba,
by Federico Garcia Lorca
King Lear, by William Shakespeare

2001-2002

Through the Looking Glass, from Lewis Carroll,
adapted by Dugald MacArthur
Noonday Demons and Other Distractions,
by Peter Barnes
The Birthday Party, by Harold Pinter

2002-2003

The Screwtape Letters, from C.S. Lewis,
adapted by Anthony Lawton
Speed-the-Plow, by David Mamet
Lovers, by Brian Friel
The Tempest, by William Shakespeare

15TH
SEASON

2003-2004

Underneath the Lintel, by Glen Berger
Travels With My Aunt, from Graham Greene,
adapted by Giles Havergal
Copenhagen, by Michael Frayn
The Comedy of Errors, by William Shakespeare

2004-2005

Un-American, by Amy Gorbey, Justin Coffin
and Caryn Hunt
Death and the King's Horseman,
by Wole Soyinka
Catalpa, by Donal O'Kelly
The Great Divorce, from C.S. Lewis,
adapted by Anthony Lawton
Much Ado About Nothing,
by William Shakespeare

2005-2006

The Lady from the Sea, by Henrik Ibsen
The Foocyc, by Anthony Lawton
Novocento, by Alessandro Baricco
Richard III, by William Shakespeare

2006-2007

"*Master Harold*"...and the boys,
by Athol Fugard
QED, by Peter Parnell
The Great Divorce, from C.S. Lewis,
adapted by Anthony Lawton
La Ronde, by Arthur Schnitzler
The Taming of the Shrew, by William Shakespeare

2007-2008

The Lonesome West, by Martin McDonagh
The School for Wives, by Molière
The Screwtape Letters, from C.S. Lewis,
adapted by Anthony Lawton
Skylight, by David Hare
Othello, by William Shakespeare

2008-2009

The Hothouse, by Harold Pinter
The Government Inspector, by Nikolai Gogol
adapted by Armina LaManna
and David O'Connor
The Great Divorce, from C.S. Lewis,
adapted by Anthony Lawton
Sizwe Bansi is Dead, by Athol Fugard,
John Kani and Winston Ntshona
Hamlet, by William Shakespeare

Blank Rome LLP
is a proud sponsor
of the
Lantern Theater Company

BLANK ROME LLP
COUNSELORS AT LAW

www.BlankRome.com

We applaud educational and cultural
programs that enrich our community.

DELAWARE FLORIDA HONG KONG NEW JERSEY NEW YORK OHIO PENNSYLVANIA WASHINGTON, DC