

A close-up photograph of a moth with intricate brown and white patterns on its wings, resting on a rough, textured tree trunk. The moth's head and antennae are visible at the bottom right. The background is the natural bark of the tree, showing various textures and colors from brown to grey.

MEASURE FOR MEASURE

WILLIAM SHAKESPEARE

20/21
season

LANTERN
THEATER
COMPANY

STREAMING ON DEMAND APRIL 6 - MAY 2, 2021

TABLE OF CONTENTS 2



Welcome.....	3
From the Dramaturg	4-8
Puritanism in England	4
Catholicism and the Poor Clares	5
Marriage Law in Shakespeare’s Time ..	6
Reporting Sexual Misconduct	7
From the Artistic Director	9
Who’s Who.....	10-17
About the Lantern.....	18
Thanks to Our Donors	19-31
Annual Fund	19
Ticket Donations	27

Anthony Lawton as The Duke in *Measure for Measure*
All production photos by Mark Garvin



LANTERN THEATER COMPANY

Charles McMahon
ARTISTIC DIRECTOR

Stacy Maria Dutton
EXECUTIVE DIRECTOR

presents

MEASURE FOR MEASURE

WILLIAM SHAKESPEARE

Dirk Durossette
SCENIC DESIGNER

Janus Stefanowicz
COSTUME DESIGNER

Drew Billiau
LIGHTING DESIGNER

Mary Kate Smyser
SOUND DESIGNER

Rebecca Smith*
STAGE MANAGER

David Bardeen
ASSISTANT DIRECTOR

DIRECTED BY
Charles McMahon

SPECIAL THANKS



Measure for Measure is part of Plays from the Lantern Archives, a new program celebrating some of the finest productions from recent Lantern seasons, brought vividly back to life on screen.

This performance was professionally filmed with a live audience in April 2019.

*Member of Actors' Equity Association, the Union of Professional Actors and Stage Managers in the U.S.

© 2021. ALL RIGHTS RESERVED. FURTHER DISTRIBUTION OF THIS PRESENTATION BY DOWNLOADING, RE-STREAMING, REPOSTING, BROADCAST, TELECAST, OR IN ANY OTHER MANNER OR MEDIUM, IS STRICTLY PROHIBITED, A VIOLATION OF THE CREATORS' RIGHTS, AND ACTIONABLE UNDER APPLICABLE COPYRIGHT LAW.

Ben Dibble as Angelo and
Claire Inie-Richards as Isabella
in *Measure for Measure*

Puritanism in England

When Shakespeare wrote *Measure for Measure* in 1603, the Catholic Church had been officially dismantled in England for decades. The Protestant Reformation that swept Europe in the 16th century took root in England with Henry VIII and his son Edward VI, persisted through the reversal and executions of Mary I's Catholic reign, and was solidified under the leadership of Queen Elizabeth I. However, many Protestants were dissatisfied with Elizabeth's reforms, giving rise to the Puritan movement that is present in Angelo's extremism.

When Elizabeth ascended to the English throne in 1558, she was following her half-sister Mary's violent attempts to bring England back to the Catholic Church; Mary executed nearly 300 Protestants and exiled many more. When Elizabeth took the throne, she reestablished the Church of England, put herself at the head of the church, and mandated that her subjects attend services on Sundays.

Elizabeth's changes did not go far enough for many English Protestants. The most fanatical of these Protestants became known as Puritans, who worked to further their extremist version of Protestantism even after Elizabeth refused to continue reforming the church. The Puritans prevailed in many respects: clergy were allowed to marry, religious iconography was banned and destroyed, and much of the liturgical language was stripped of its Catholic influence. But Elizabeth was interested in compromising with English Catholics after the violence of Mary's

Clockwise from top left: Early Protestant reformer William Tyndale, Henry VIII, a 1549 copy of the Protestant Book of Common Prayer, Elizabeth I, Mary I, Edward VI





Early image of St. Clare and her order



Early image of St. Francis

reign, and this willingness to fold some Catholic traditions, language, and practice into Church of England policy angered the Puritans that sought to purify the church. Angelo's inflexibility might find its roots in these fundamentalist leanings.

As is often the case, these ideological differences would eventually boil over into violence. When James I succeeded Elizabeth in 1603 - the year *Measure for Measure* was written - he faced at least two conspiracies against his life that were based in part on the divides between Catholicism, the Church of England, and Puritan dissatisfaction with the latter. Forty years later, Puritanism would become a central issue in the English Civil War, placing them in power for decades and imposing strict religious and moral codes on the English people.

Catholicism, the Franciscans, and the Poor Clares

Despite being written in a Protestant country for a largely Protestant audience, *Measure for Measure* is set in a Catholic state with a devoutly Catholic woman at its center.

Until the Protestant Reformation exploded in 1517, Catholicism was the dominant form of Christianity. Protestantism developed in opposition

to a number of core tenets of Catholicism, including the authority of the Pope and the accessibility of the language. Catholics worshiped in Latin, while Protestants translated prayers and scripture into English. Another major difference was how one might get into heaven: for Protestants, especially at the time, faith alone would save you. Catholics, on the other hand, believed your actions on Earth determined your state in the afterlife; good deeds count in your favor, while bad ones count against you.

Another major difference is the existence of religious orders. In *Measure for Measure*, Shakespeare aligns his characters with two Catholic orders: the Duke pretends to become a Franciscan monk while Isabella plans to join the Order of St. Clare, or the Poor Clares. These orders are related: St. Clare was a follower of St. Francis of Assisi and founded her order of nuns based on his teachings for his order of friars. Both orders are extremely austere, taking vows of poverty. The Poor Clares were especially severe, promising not to own anything, to live on what they grow or receive as donations, and to remain as silent and as enclosed within their convent as possible. The goal of this simplicity is to purify the nuns' relationships with God by removing earthly distractions, and to make their prayers for humanity all the more powerful.

The Franciscans had a similar reputation for austerity; St. Francis formed the order on the foundation of a holy poverty. But in Shakespeare's time, the Franciscans were also stereotyped as hypocritical and corrupt, as they held a good deal of power in the Catholic Church. By selecting these particular orders and setting the play deep in a Catholic world, Shakespeare is both working within his audience's existing perceptions of the Catholic Church and creating enough distance to unmoor them, letting them know that the rules they live by in England do not apply to this version of Vienna.

Marriage Law in Shakespeare's Time

In Shakespeare's England, marriage was not necessarily the ceremonial event we recognize today. While both church and state preferred that a religious ceremony take place with witnesses present, the only technical requirement was the free consent of both parties. There were two types of these kinds of "irregular" marriage contracts: *de praesenti* and *de futuro*. The former was simply a present agreement to be married, and the latter was a promise to marry at a later date, pending certain considerations (like dowry) could be fulfilled. However, if a couple in a *de futuro*

arrangement had sex, their contract was automatically converted to a *de praesenti* marriage. These marriages were considered irregular and “blameworthy,” but they were still legally recognized in England until the late 18th century.

Shakespeare’s audience would have brought this understanding to the play. However, by setting the play in a Catholic state, Shakespeare undermines these arrangements; as of 1563, these types of marriages were disallowed in Catholic countries, meaning that the characters of *Measure for Measure* have less marital freedom than the English audience watching the play. With this tension, Shakespeare highlights both the stricter behavioral codes of non-Protestant countries and the inflexibility of Puritan-like ideologues such as Angelo.

“Who will believe thee, Isabel?”: Reporting Sexual Misconduct

With all the focus on religion and fundamentalism in the play, the most shocking moment comes at the middle of the story: a powerful man’s attempt to coerce a woman into having sex with him, leveraging his power against her lack thereof, his gender against hers, and his hypocrisy against her beliefs.

Sexual coercion, harassment, and assault are issues that existed long before our current definitions; in fact, the term “sexual harassment” was not coined until the 1970s, but the behavior certainly predates that. While our understanding of this misconduct has evolved, so too have our laws; in Shakespeare’s time, men’s testimony was weighted more heavily than women’s, and women could face prosecution for slander if they accused a powerful man of sexual misconduct - especially since her testimony would not be sufficient to convict him.

DELVE INTO THE PLAY WITH LANTERN SEARCHLIGHT

Explore Shakespeare’s “problem” plays, religious extremism in Shakespeare’s time, the dangers of unaccountable leaders, *Measure for Measure*’s connection to modern themes of gendered power dynamics and political hypocrisy, and more.

lanterntheater.org/searchlight

The stigma of reporting persists today: estimates say as few as 35% of sexual assaults are ever reported to the police. Much of this has to do with the fear that – despite the rarity of faked accusations – they will not be believed.

Despite her pristine reputation and intention to live as a chaste nun, Isabella finds that her word still may not outweigh Angelo's. This tendency to put faith in the powerful man's denial over the victim's testimony is an obstacle for Isabella and, centuries later, for many women today. From Supreme Court nominees to music producers to powerful comedians, the reputations of prominent men have repeatedly taken precedence over the testimonies of women who have credibly accused them of assault and harassment.

But were she here today, Isabella might have more faith in being heard. Started in 2007 by Tarana Burke, the #MeToo movement picked up steam in the wake of the Harvey Weinstein scandal as women bravely came forward with stories of their own abuse and assault. This movement provides an outlet for millions of everyday women to talk about how they too continue to face situations like Isabella's, where power and gender intersect and result in dehumanizing sexual misconduct.

—Meghan Winch



Tarana Burke (center) and other marchers at the #MeToo Survivors' March

FROM THE ARTISTIC DIRECTOR 9

Although the language in *Measure for Measure* may sound foreign to the modern ear, the urgency of the human problems on display in one of Shakespeare's most famous "problem plays" is immediately recognizable to our current age.

What happens to the body politic when the institutions of law and justice become corrupt, serving the interests of the powerful few and imposing rigor on those most in need of the law's protection? Today we wrestle with this dreadful question in almost every one of the powerful institutions in which generations of Americans have entrusted their good faith and life's labors. Church, government, the legal system, and almost every industry have been exposed as riven with systemic corruption and grotesque self-interest. This is the world that Shakespeare examines, and it is the world we confront when we read the morning news.

Measure for Measure seems at times like a strange thought experiment. Shakespeare wrote many plays that ask: What is legitimate authority? And he wrote several plays about what happens when a ruler or a ruling principle goes absent. In *The Tempest*, Prospero seeks to restore his rule after being usurped. In *Measure for Measure*, the Duke seems like a near relative of Prospero; having withdrawn substantially from his ruling responsibilities in favor of intellectual pursuits prior to the action of the play, the Duke rouses himself to corrective action and embarks on a convoluted plan. But events come to a much worse pass than he could have possibly imagined, and he is forced to improvise to set things right before it is too late.

I can best make sense of these plays if I see them simultaneously through the three lenses of the social, the psychological, and the philosophical. If we see the Duke as a stand-in for Shakespeare himself, then the psychological and philosophical questions predominate: What is my ruling principle? What should be in charge of me, and how have I neglected it? What furtive corruptions are lurking in my own psyche, waiting for their opportunity to express themselves?

Still, what is so jarringly modern about this play is how resonant the characters of Isabella and Angelo are. Isabella is a bold voice for justice, unmoved by fear for herself and determined to speak truth. Angelo is a proud man fallen into the absolute depth of hypocrisy. As Shakespeare's audience surely did 400 years ago, we want justice for Isabella and we feel a visceral desire to see Angelo get what he deserves. And yet the theme of the play is mercy as much as it is justice. How do we impose one when we all so desperately need the other? In this world that is so fully infused with systemic evil in every institution of power, perhaps we yearn for our version of the Truth and Reconciliation process that South Africans created to deal with and help heal from apartheid. I see in the finale of this play that truth and reconciliation is the only way to have both justice and mercy. Mercy must be available to all who seek it, but it doesn't come cheap.

—Charles McMahon

WHO'S WHO 10



Chris Anthony
Claudio / Ensemble



Kirk Wendell Brown*
Escalus / Ensemble



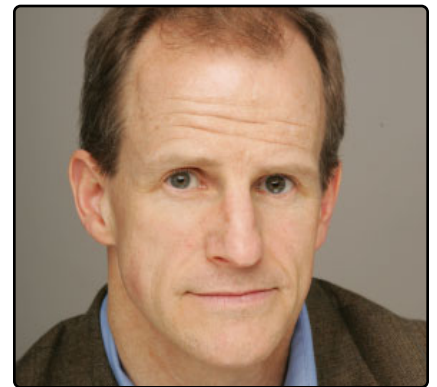
Ben Dibble*
Angelo / Ensemble



Adam Hammet
Pompey / Ensemble



Claire Inie-Richards
Isabella / Ensemble



Anthony Lawton*
The Duke / Ensemble



Jered McLenigan*
Lucio / Barnardine / Ensemble



Charlotte Northeast*
Mistress Overdone / Mariana / Ensemble

Setting

Various locations
in Vienna

This performance was professionally filmed with a live theater audience in April 2019.

The performance will include one 10-second intermission, but you may pause at your convenience.

CHRIS ANTHONY (Claudio / Ensemble) Previous Lantern shows include *The Heir Apparent*, *Don't Dress for Dinner*, *The Tempest*, *Coriolanus*, *As You Like It*, and *Photograph 51*. He has been featured at the Provincetown Tennessee Williams Theater Festival with DieCast Theatre, and locally with EgoPo Classic Theater, Commonwealth Classic Theatre Company, Flashpoint Theatre Company, New City Stage Company, and Philadelphia Shakespeare Theatre. Commercial and film credits include *Slow Learners*, *Zeroes*, and the *Animal Planet Puppy Bowl*. Chris currently resides in IL where he is an MFA acting candidate at NIU. BA in theater from IUP.

KIRK WENDELL BROWN (Escalus / Ensemble) is thrilled to be rejoining Team Lantern in its effort to provide riveting content during the pandemic and cautiously optimistic that we'll all be performing live again soon. Cheers to those who've helped to make this possible. He dedicates this virtual performance to his cousin Rodney.

BEN DIBBLE (Angelo / Ensemble) is thrilled to be back! Lantern credits include Father Flynn in *Doubt*, *La Ronde*, *The Taming of the Shrew*, Elyot in *Private Lives*, the world premiere of the musical *Minors*, and the title role in *Henry V*. Ben has appeared in over 80 professional productions on stages all over the Greater Philadelphia area. Some favorite roles include Bruce in *Fun Home* and Leo Frank (Barrymore Award) in *Parade* (Arden Theatre Company); Dr. Frank in *Young Frankenstein*, Lord Farquaad in *Shrek*, Freddy in *Dirty Rotten Scoundrels*, Garry in *Noises Off*, and Leo Bloom in *The Producers* (Walnut Street Theatre); John Adams in *1776* and Dan in *Next to Normal* (The Media Theatre); and the title role in *Herringbone* (Barrymore Award) with Flashpoint Theatre Company. Thanks to Charles for the chance to tackle this complex role. Love to my wife Amy, and the Dibbles Lila, Jonah, and Margaret, without whom none of this artistic life would be possible.

ADAM HAMMET (Pompey / Ensemble) Originally from Kent, England, Adam received his degree in acting from Middlesex University, London. Highlights from his work in the UK include *Journey's End* at the Theatre Royal Margate and *Dinner* at the Brighton Fringe Festival. Recent Philadelphia credits: *Red Velvet*, *Coriolanus*, *Romeo & Juliet*, *The Heir Apparent*, and *Measure for Measure* (Barrymore nomination for Best Supporting Actor) at Lantern Theater Company; *Mary Rose* with the Philadelphia Artists' Collective; and Philip Ridley's *Radiant Vermin* for Inis Nua Theatre Company. He has also acted for a

number of educational institutions including two years with Drexel's Advanced Directing Class and Jefferson University's Arts and Humanities Society Showcase.

CLAIRE INIE-RICHARDS (Isabella / Ensemble) Lantern Theater Company: *Measure for Measure*, *Mrs. Warren's Profession*; People's Light (Company Member): *America 2AM (The Perilous Flight)*, *Our Town*, *I and You*, *Project Dawn*, *Sense and Sensibility*, *The Cherry Orchard*; Theatre Exile: *Completeness*; Theatre Horizon: *The Revolutionists*; Shakespeare in Clark Park: *The Two Gentlemen of Verona*; Delaware Theatre Company: *A Christmas Carol*; BBC Radio 4: *Mercury 13*; Academy for Classical Acting/Shakespeare Theatre Company (MFA): *Cymbeline*, *Hamlet*, *Man and Superman*; BFA, Royal Welsh College of Music and Drama.

ANTHONY LAWTON (The Duke / Ensemble) has acted in Philadelphia for 28 years. Favorite roles include George in *Of Mice and Men* (Walnut Street Theatre); "man" in *Brief Interviews with Hideous Men* (1812 Productions); Friar Laurence in *Romeo and Juliet* (Arden Theatre Company); and Austin in *True West*, Coleman in *The Lonesome West*, and Storyteller in *A Christmas Carol* (Lantern). In 2005, Lawton, in partnership with the Lantern, wrote and developed *The Foocy*, which garnered five Barrymore nominations (including Best New Play). In 2016, his adaptation of *The Light Princess* (with music by Alex Bechtel) was nominated for eight Barrymores, winning for Best Original Music. *Philadelphia City Paper* named him the city's "Best One-Man Theatre" for his solo productions of *The Devil and Billy Markham*, *The Great Divorce*, and *The Screwtape Letters*. For more information on these shows, go to www.anthonylawtonactor.com

JERED MCLENIGAN (Lucio / Barnardine / Ensemble) has been working with the Lantern since 2005, most recently in *The Resistible Rise of Arturo Ui* and *Betrayal*, and he is grateful for this opportunity to have his work shared online. His recent pre-pandemic appearances include EgoPo Classic Theater's *Fool for Love* and Quintessence Theatre's *Wizard of Oz*. He most recently appeared in The Wilma Theater's digital production of *Heroes of the Fourth Turning*, which just received a 2021 Drama League Award nomination for Outstanding Digital Theater, Individual Production. He is a member of the Wilma's Hothouse Company and a three-time Barrymore recipient. He looks forward to seeing you back in the theater sometime soon... many thanks, as always, for your support!

CHARLOTTE NORTHEAST (Mistress Overdone / Mariana / Ensemble) is a two-time Barrymore Award winner for her work at InterAct Theatre Company and Lantern Theater Company. Graduate: Circle in the Square. Credits include Philadelphia Artists' Collective (PAC), of which she's an artistic associate, Act II Playhouse, Theatre Exile, Passage Theatre, Azuka Theatre, Montgomery Stage, Hedgerow Theatre, Tribe of Fools, Orbiter 3 (Barrymore nomination), Delaware Theatre Company, and Walnut Street Theatre. Co-creator and performer of *The Complete Works of Jane Austen, Abridged* and a world premiere solo show *They've All Gone & We'll Go Too*, which will travel to the Edinburgh Fringe Festival in 2022 (fingers crossed). Next up: *Social Distances*, a live Zoom play by Ian August with Tiny Dynamite, and the title role in a new adaptation of *Jane Eyre* with PAC. Love to Damon, Jules, Pug, and Cat. Thanks to everyone for continuing to support theatre and the arts - no matter the format. Visit: www.charlottenortheast.com

WILLIAM SHAKESPEARE (Playwright) (1564-1616) is widely considered to be the greatest writer in the English language. Shakespeare's plays and poems are known throughout the world, but his personal life remains a bit of a mystery. Aside from financial records that indicate his father's business as a leather merchant, there is relatively little known about Shakespeare's youth in Stratford-upon-Avon before he married Anne Hathaway in 1582. It is believed that he arrived in London around 1588 and established himself as an actor, playwright, and poet. By 1594, he was acting and writing for the Lord Chamberlain's Men, and later the King's Men, the most successful theater company in London. As part-owner, Shakespeare became not only a famous playwright but a successful businessman, and returned to Stratford to retire comfortably in 1611. More on Shakespeare and his work: lanterntheater.org/searchlight

CHARLES MCMAHON (Director & Lantern Artistic Director) co-founded Lantern Theater Company in 1994 and serves as artistic director in addition to directing, acting, and writing for the company. He has directed all but one of the Lantern's annual Shakespeare productions, including recent productions of *Othello*, *Measure for Measure*, *The Tempest*, *Coriolanus*, and *As You Like It*. Other Lantern directing credits include *The Resistible Rise of Arturo Ui*, *The Taming of the Shrew*, *Henry V*, *New Jerusalem*, *Romeo & Juliet*, *A Midsummer Night's Dream*, *Hamlet*, *Othello*, *La Ronde* (also translator and adapter), *Richard III* (Barrymore Award, Outstanding Production of a Play), *The Comedy of Errors*

(Barrymore nomination, Outstanding Direction of a Play), *Much Ado About Nothing*, *King Lear*, *The House of Bernarda Alba*, and *A Doll's House*. His acting credits include reprising the role of Heisenberg in *Copenhagen*, and his writing credits include *Oscar Wilde: From the Depths* and co-creating an original adaptation of Dylan Thomas' *A Child's Christmas in Wales*, which was honored with two Barrymore Awards and five nominations, including a nomination for Outstanding New Play. A native Philadelphian, he is a graduate of New York University's theater department where he studied acting and directing.

DIRK DUROSSETTE (Scenic Designer) Off-Broadway scenic designs include *The Outgoing Tide* and *Any Given Monday*. He has designed for Amaryllis Theatre Company, Azuka Theatre (Barrymore nomination: *Skin and Bone*), Act II Playhouse (*Any Given Monday*: world premiere), Enchantment Theatre Company (National Tour: *Harold and the Purple Crayon*), Theatre Exile, 1812 Productions (*First Day of School*: Philadelphia premiere), Delaware Theatre Company, EgoPo Classic Theater, Freedom Theatre, Flashpoint Theatre, InterAct Theatre Company, Lantern Theater Company (Barrymore nomination: *Skylight*), Luna Theater, Painted Bird Productions (*A Few Small Repairs*: world premiere), Theatre Horizon, Philadelphia Shakespeare Theatre, Mum Puppettheatre, Portland Opera (Maine), The Wilma Theater (*Leaving*: associate designer, American premiere), Temple Theaters, Temple Opera Theater, University of the Arts, Drexel University, Lawrence University (Wisconsin), Peabody Institute (Baltimore), West Chester University, Villanova University, and The University of Memphis.

JANUS STEFANOWICZ (Costume Designer) is happy to be designing for Lantern Theater Company again and working with director Charles McMahon. She has designed for numerous theater companies in NYC and Philadelphia. Janus is the resident costume designer and shop manager for Villanova University's Theatre Department. Since 1996, she has been nominated for 16 Barrymore Awards for Outstanding Costume Design and has won three: in 2006 for *Intimate Apparel* at Philadelphia Theatre Company, and in 2003 for *Big Love* and 1998 for *On the Razzle*, both at The Wilma Theater.

DREW BILLIAU (Lighting Designer) is a multi-disciplinary lighting designer based in the Philadelphia area. Recent designs include *The Electric Desert* for the Phoenix Desert Botanical Garden, a collaboration with Klip Collective, *Dito and Aeneas* for Opera Philadelphia, Samsung at the Consumer Electronics

Show in Las Vegas, and the 150 Eglinton mural in Toronto. Upcoming projects include *La bohème* for Opera Philadelphia and a lighting mural on 6th Street in collaboration with artist David Guinn. Drew has designed numerous shows for such companies as Jacob's Pillow, New York Theatre Workshop, The Joyce Theater, Vail International Dance Festival, Opera Philadelphia, BalletX, Vancouver Opera, Pennsylvania Ballet, The Wilma Theater, Portland Ballet, Lucidity Suitcase, New Paradise Laboratories, New York Music Theatre Festival, Arden Theatre Company, Theatre Exile, and Lantern Theater Company. Drew is currently the director of design and technology at Opera Philadelphia and an associate designer with the corporate/industrial lighting firm Fine Design Associates, Inc.

MARY KATE SMYSER (Sound Designer) is a Philadelphia-based sound designer and engineer who has designed shows at Temple University (*Chicago* and *Side Show*) and Cape May Stage (*The Lion in Winter*, *Chapter Two*, and *At Wit's End*). She has also associate designed alongside Daniel Perelstein (*Hand to God*, *Hillary and Clinton*, and *The Secret Garden*) and Michael Hahn (*Hetty Feather*, *Henry V*, and *Much Ado About Nothing*). She has also engineered consistently at Arden Theatre Company since October 2017 and Delaware Shakespeare since summer 2016 as well as various productions at Lantern Theater Company, Theatre Exile, Theatre Horizon, and Temple University.

REBECCA SMITH (Stage Manager) has been the stage manager at the Lantern for 14 years, although none have been quite like this. A proud member of Actors' Equity Association, she has previously worked with Theatre Exile, New Paradise Laboratories, and Brat Productions, among others. She is a graduate of Temple University with a BA in European history and a minor in theater.

DAVID BARDEEN (Assistant Director) directed the Lantern's Zoom reading of *Henry IV, Part 2* last spring and was the associate director of the Lantern's production of *Othello*, cut short by Covid-19, as well as the assistant director for this production of *Measure for Measure*. As an actor, he has worked the most here at the Lantern (*Long Day's Journey into Night*, *New Jerusalem* - twice, *Henry V*, *The Taming of the Shrew*, *Oscar Wilde: From the Depths*, *Mrs. Warren's Profession*, *Coriolanus*, *Red Velvet*, and *Othello*). David has also worked at most theaters in town, including Walnut Street Theatre and Studio 3, Arden Theatre Company, The Wilma Theater, InterAct Theatre Company, Theatre Horizon, Azuka Theatre, 1812 Productions, 11th Hour Theatre Company,

IRC, Irish Heritage Theatre, PAC, and the Philadelphia Orchestra. David is a graduate of the Yale School of Drama and would like to thank Charles McMahon and Stacy Dutton for their support and trust.

STACY MARIA DUTTON (Executive Director) was named executive director of Lantern Theater Company in 2016, after serving on the company's Board of Directors for over a decade. Her prior career in investment management spanned 25 years, including serving as managing partner of Brandywine Global Investment Management and as co-founder and chief operating officer of Hygrove Partners. She served on the Board of Directors of the Philadelphia Orchestra Association from 2007 to 2019, including service as Audit Committee Chair and Investment Committee Chair. In 2011, she was named Business on Board Member of the Year by the Arts & Business Council of Greater Philadelphia. She earned an MBA from the Wharton School of the University of Pennsylvania, a BA in philosophy from the University of Chicago, and pursued graduate studies at the Nitze School of Advanced International Studies (SAIS) of the Johns Hopkins University.



Kirk Wendell Brown as Escalus and Charlotte Northeast as Elbow in *Measure for Measure*



Chris Anthony as Claudio and Jered McLenigan as Lucio in *Measure for Measure*

ARTISTIC & EDUCATION

Artistic Director	Charles McMahon
Associate Producer	Rebecca Smith
Education Director	M. Craig Getting
Artistic Associate	Hannah Spear
Resident Dramaturg	Meghan Winch
Commissioned Artists	Christopher Colucci, Bruce Graham, Anthony Lawton, Forrest McClendon, Thom Weaver
Teaching Artists	Marissa Barnathan, Carly Bodnar, Susan Chase, Mike Dees, Charlie DelMarcelle, L Feldman, Donovan Lockett, Jarrett McCreary, Bi Jean Ngo, Charlotte Northeast, Geneviève Perrier, David Pica, Lillian Ransijn, Ryan Walter, Harry Watermeier
<i>Illumination</i> Actors.....	Benjamin Brown, Tyler Elliott, Victoria Aaliyah Goins, J Hernandez, Dave Johnson, Travoye Joyner, Annette Kaplafka, Keith Livingston, J Paul Nicholas, Krystal Ortega, Ebony Pullum, Melissa Rakiro, Nick Schwasman, Jahzeer Terrell, Frank X

ADMINISTRATION

Executive Director	Stacy Maria Dutton
Finance & Communications Consultant	Anne Shuff
Mission Operations Manager	Ileana Fortuño
Grants Manager	Ali Nebistinsky
Administrative Associate	Emily Wilson

PRODUCTION for *MEASURE FOR MEASURE*

Production Manager	Janet Embree
Stage Manager	Rebecca Smith
Filmmakers	Natural Light Films, Inc.
Assistant Production Manager.....	Elizabeth Meisenzahl
Assistant Stage Manager	Erika Graff
Technical Director	Scott Cassidy
Costume Supervisor.....	Natalia de la Torre
Master Electrician.....	Tim Laxton
Scenic Charge.....	Sarah Sindelar
Audio Engineer	Tyler Jedlinski
Master Carpenters	Stephen Peterson, Jay Wojnarowski
Carpenters	Micah Greenleaf, Michael Lambui, Ned Pryce
Painters	Micah Greenleaf, Lydia Stahl
Assistant Costume Designers	Courtney Boches, Asaki Kuruma
Stitcher.....	Kelly Myers
Electricians	Alex Dossantos, Zach Longcor
Wardrobe Run Crew.....	Alex Donnelly
Board Operator.....	Arthur Lee Robinson

About the Lantern

**LANTERN
THEATER
COMPANY**

Lantern Theater Company produces plays that investigate and illuminate what is essential in the human spirit and the spirit of the times. We seek to be a vibrant, contributing member of our community, exposing audiences to great theater, inviting participation in dialogue and discussion, and engaging audience members about artistic and social issues.

Illumination Education Program

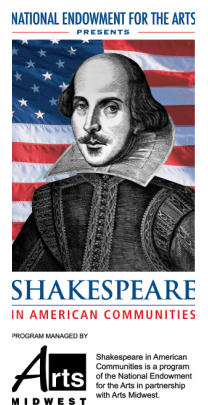
Our *Illumination* education program complements and expands on the work of classroom teachers to bring an essential artistic lens to curricular material, allowing students to connect to classic stories in a dynamic way and empowering teachers with new approaches to traditional literature. Our lessons are designed to support student development in three key areas: the ability to think critically and problem solve, the ability to communicate effectively, and the ability to collaborate. Following a decade of providing arts-integrated instruction in the classroom, we have found that exposure to the theatrical discipline deepens student understanding of assigned material and fosters empathy and positive collaborative habits – essential skills that will provide long-term benefits to students into their adult lives.

We are deeply grateful to the individuals, foundations, corporations, and government partners listed here and on the following pages whose generosity provides critical support for our award-winning artistic, education, and community programming. Please consider making a tax-deductible donation by visiting us online at lanterntheater.org/support.

MAJOR SUPPORT PROVIDED BY



CHG CHARITABLE TRUST



lanterntheater.org/support

THANKS TO OUR DONORS 19

THANK YOU!

The following list includes annual fund gifts received between 1/1/20 and 3/24/21. Although space does not allow us to list donations under \$100, we are enormously grateful to *everyone* who helps support our artistic, education, and community engagement programs. We can't do it without *YOU*.

FOUNDATION, CORPORATE, and GOVERNMENT SUPPORT

Actors' Equity Association
Andrew W. Mellon Foundation
Bendita Foundation
Brind Foundation
Caroline Fredericka Holdship Charity
through the PNC Charitable Trusts
Grant Committee
Charlotte Cushman Foundation
CHG Charitable Trust
Christian R. and Mary F. Lindback
Foundation
Christopher Ludwick Foundation
Connelly Foundation
COVID-19 Arts Aid PHL Fund
Dolfinger-McMahon Foundation
Forman Family Fund
Haley Foundation
Harry G. & Pauline M. Austin
Foundation
Henrietta Tower Wurts Memorial
Independence Foundation
Jana Foundation
John Otto Haas 1955 Trust
June & Steve Wolfson Family
Foundation
The Lida Foundation
Lincoln Financial Foundation
Manny & Ruthy Cohen Foundation
MKM Foundation
National Endowment for the Arts
Nora Roberts Foundation
Pennsylvania Council on the Arts
Philadelphia Cultural Fund
Rittenhouse Foundation
Rosenlund Foundation

Ross Family Foundation
Shubert Foundation
Stewart Family Foundation
Suzanne Roberts Cultural
Development Fund
Virginia Brown Martin Fund of the
Philadelphia Foundation
William Penn Foundation
Wyncote Foundation

QUASARS (\$7,500+)

Dana & Melissa Ash
Jim & Janet Averill
Eugene & Joann Bissell
Michael Buckley & Mason Barnett
Stacy Maria Dutton
Estate of Ruth Herd
Carole Gravagno
Leonard & Mary Lee Haas
Margaret Harris & Philip Straus
Gregory Kleiber & Harriet Ravdin
Kevin & Sarah Kleinschmidt
Neal Krouse & Liz Knudsen
Ellen Rosen Rogoff
Richard & Roberta Shell

SPOTLIGHTS (\$2,500 - \$7,499)

Anonymous
Sheila & Myron Bassman
Peter Benoliel & Willo Carey
Andrea Biondo & Kenneth Hartzell
Bruce & Barbara Byrne
John & Susan Coleman
Jeffrey Cooper & Nancy Klaus
John & Fern Culhane
Lauren Dussault
Ann S. & Steven B. Hutton

THANKS TO OUR DONORS 20

Jim McClelland & Lynn H. Miller
Susan B. Muller
Lynn & David Oppenheim
David Pierson & Barrie Trimmingham
Bette Renaud & Rob Hoffman
Lucy Bell Sellers
Kaki Short
Jeanne Sigler & James Fratto
Bart & Sandy Silverman
Rebecca & Rhys Williams

LIMELIGHTS (\$1,000 - \$2,499)

Lorinda Lou Beller
Elaine Woo Camarda
Pauline Candaux & Sol Katz
Michael & Clairellen Catalano-Johnson
Carol & Ray Cook
Cynthia Cooke & Beth Anne
Spanninger
Brendan & Chrstine Cox
Robert M. Dever
Tobey & Mark Dichter
Gene F. Dilks
Dieter & Sara Forster
Mark Froehlich
Dr. Alice George
Eduardo Glandt & George Ritchie
Linda & David Glickstein
Stephen & Barbara Gold
Maxine & Jay Goldberg
Janice T. Gordon, PhD
Mark & Vivian Greenberg
John & Susan Hansen-Flaschen
Donna M. Hill, Esq. & John R. Wilson, Jr.
Kenneth Hutchins

Annabelle Jellinek
Betsy Kalish
Sampath Kannan
Everett Kenyatta
Leonard Kolins & Faye Goldman
Wynn & Anne Silvers Lee
Charles McMahon
David McMahon & Rebecca Berman
Ralph Muller & Beth Johnston
Leonard Nakamura & Myra Leysorek
Susan Odessey
Barbara Oldenhoff
Thomas & Karin Pajak
Lance & Ginny Parry
Janet Perry & David Richman
Claire & Lud Pisapia, in memory of Joe
Crosley
Pamela & Gresham Riley
Lee & Roy Shubert
Paulette Singleton
Gayle & David Smith
Robert Urquhart & Marsha Lester
Ted & Stevie Wolf
June & Steve Wolfson

TORCHES (\$500 - \$999)

Anonymous (3)
Elizabeth Armour & Philip Rakita
Michael Brooks
Carol & Bruce Caswell
Joan I. Coale
Peter & Terry Conn
Peter DeLaurier
Rhonda Dickey
Ana Diez Roux

BOARD OF DIRECTORS

Gregory J. Kleiber, *Chair* • Donna Saul Millen, *Vice President* • Brendan P. Cox, *Treasurer* •
Ellen Rosen Rogoff, *Secretary* • Dana J. Ash • Eugene Bissell • Jeffrey Cooper •
Lauren Dussault • Stacy Maria Dutton • Stephen Field • Judith D. Freyer •
Melissa Greenberg • Betsy Kalish • Everett Kenyatta • Kevin Kleinschmidt •
Charles McMahon • Elizabeth Renaud • Kaki Short • Jeanne Sigler • Rebecca Williams

THANKS TO OUR DONORS 21

Dwight & Jennifer Edwards
Nancy Ely-Rafael
Robert & Doris Fanelli
John & Nancy Fischer
Oliver & Monica Flint
Juliet Forster
Mark & Sally Frazza
Jim & Kay Gately
Elizabeth H. Gemmill
Howard & Norah Goldfine
Charles & Alison Graham
George Graham & Kyle Merker
Kathleen Hovde & Kenneth Kulak
Judith & Richard Hurtig
Brearley B. Karsch
Eve & Ken Klothen
Harry & Stacy LaBelle
Ann Lesch
Lynn Mather
Peggy Morgan
Anette Munt & Jonathan Israel
Liz & Reid Murray
Zoe S. Pappas
Lynn Paul
Clifford Pearlman & Lynn Marks
Steven J. Peitzman
Barbara Plumeri
Paul Rabe & Cheryl Gunter
Matt Rader & Michael Smith
Steve Ralston & Rob Hair
Mary-Ann & Kurt W. Reiss
Edward & Geralyn Rock
Sevgi Rodan
Peter & Wanda Ronner
Adelle Rubin
Patricia Saddier
Philip Scranton & Virginia McIntosh
Antoinette Farrar Seymour
Robert & Karen Sharrar
John & Susan Smith
Lenore Steiner & Perry Lerner
Kathleen A. Stephenson
Robert & Susan Tafel
Anne & Richard Umbrecht

John & Christine Van Horne
Karen Vesely & Evan Siegelman
Dr. Vaclav Vitek
Barb & Jim Wakefield
Dr. R.J. Wallner
Lyn Wiesinger
Linda Witt & James Marsh

FLARES (\$250 - \$499)

Anonymous (5)
Jerry Abelson & June Idzal
Gary & Mary Ammon
Phyllis Barsky
Raymond Becker & Richard Wilson
Sheila Bell
Michele Bennett
David & Helen Braverman
Victoria & Jim Brown
Mark & Cecile Burgert
Sandy Cadwalader
Elena Cappella
John Caskey & Janet Ginzberg
Susan W. & Cummins Catherwood, Jr.
Tung Chan & Pamela Yong
Joan & Joel Chinitz
Constance & Michael Cone
Barbara Culbert
Takeshi & Sayuri Egami
David Elesh
Jacqueline Falkenheim & David Cast
Maxine Field
Daniel Fife & Elizabeth Rappaport
Tom & Michele Foley
Steven & Ellen Friedell
Martin & Sheri Friedman
Paula Fuchsberg
Dr. Mark Fung
Bill & Dot Gaboda
Dan Gannon
Nancy J. Gellman
Deborah Glass
Ron & Marcia Goldstein
Marie Gottschalk
Barbara S. Gray, PhD & Paul Shipkin, MD

THANKS TO OUR DONORS 22

Paul D. Green
Melissa Greenberg & Peter Badgio
Margaret Hamilton
Bruce & Karen Harrison
Leslie Hempling
Diane & Dan Hofer
Michael J. Hozik & Margaret L. Rea
Evelyn Isom
Paige & Bernard Kaplan
Marc Kittner & Ashley Hulse
David LaGrega & Kristin Peresta
Robert & Susan Lang
Dr. & Mrs. Joseph Lawton
Christine MacArthur
John J. Mack, Jr.
Joseph Manko
Larry McClain
George & Jeannine McLaughlin
George McNeely
Rev. David W. Mickiewicz
Kristin Minot
Ann Mintz & Clifford Wagner
Mara Natkins & Jerry Fagliano
Paul L. Nolan
Joe M. Norton
Michael Ochs & Erica Golemis
Maureen T. Parris
Marcia Paullin
Jason & Kersti Powell
Siobhan Reardon
Timothy Rivinus
Nan Rosner
Dan & Barbara Rottenberg
Vincent & Lila Russo
Michael Sammin
Karen Schermerhorn & Evan Seymour
Cathy Scott
Hass & Georgia Shafia
Mark Shvets
Jerry & Marilyn Smith
Molly & Duane Smith
Shirley & Cecil Smith
Paulette Steffa
Robert Stewart & Barbara Barnett-
Stewart

Dale Sturgess
Etheldra Templeton & Barry
Cooperman
Judy Trailer
Erik & Joyce Videlock
Sangeeta Vohra
Thomas Wadas & Cynthia Zetye
Rosemary Watt
Jeannine & David Webber
Bob Weinberg & Eleanor Wilner
Leonard Weinberg & Frances Gallun
Judith Wertheim
James & Jenette Wheeler
Edward Wolfe & Francis Mitchell
Dr. Linda Yu-ning Wong
Jeanne Wrobleski

CANDLES (\$100 - \$249)

Anonymous (39)
Robert Abramowitz & Susan Stewart
John Abrams & Judith Everitt
David & Joyce Ackerman
Betsy Anderson & David Sullivan
Alan Ankeny
Judith & Yair Argon
John Attanasio & Maryanne Schiller
Sylva Baker
Tom Bale
Tom & Barbara Bale
Harry F. Bambrick, Jr.
Carolyn & George Bassett
John Bates
Gregory Batker & Suet Lim
Robert Bauer & Sandy Clay Bauer
Blanche Baurer
Eileen Bazelon
Melanie Belinsky
Elana Benamy & Ray Scheinfeld
Deedee Bennett
Cordelia Biddle & Steve Zettler
Anita & Ron Bihovsky
George & Janie Bingham
Marilyn & Stacy Block
Alan & Sherry Blumenthal
Allen Bonner & Carol Buettger

THANKS TO OUR DONORS 23

Marlene Bookbinder
Toni Bowers
Nancy Boykin & Dan Kern
LeHein Bui
Sidney J. Burgoyne
Louise & Jonathan Burton
Peter & Miriam Burwasser
Katherine Butler
Mary Rose Campbell
David Capozzi
William Carver
Janet M. Cary
Jane Century
Pri Chat
Sandy Cini
Beth Cohen
Marc Cohen
John Cooke
Joyce Creamer
Daniel Dagle
Gerard & Susan D'Alessio
Dr. Prudence Dalrymple
Cynthia D'Ambrosio & John Ianacone
Michael & Ann D'Antonio
Kristin Davidson
Peggy de Wolf
Charles Dean
Charlie DelMarcelle
Phyllis Detwiler
Christine Deutsch
Annette Dillard
Howard Donahue & Dorothy
Templeton
Joan Duckenfield
Donald & Geraldine Duclow
Jan Durbin
David Durham
John & Lois Durso
Bruce Edelman
Jeffrey & Carolyn Edwards
Steven P. Elliott
Linda Ellsworth
Susan & Bruce Endy
Nicole Erb & Zach Reino
David & Molly Espey

William H. Ewing
Mr. & Mrs. Farenback-Brateman
Mr. & Mrs. Frank Feingold
Jill Ellis Feninger & Michael H. Quint, in
honor of Betsy Kalish
M.J. Fischer
Richard Fitzgerald & Marilyn
MacGregor
Eugene Fluder
Joanne & Kenneth Ford
Joseph & Sarah Ford
Hazel Forster
Kathleen A. Foster
Alan & Mary Frankel
JoAnne Freed
Abraham & Sandra Gafni
Joseph Gallo & Edward Moon
Joel Gardner
Dr. Linda Dubin Garfield
Judith R. Garfinkel
Mark Garvin & Diane Menio
Rosann Gill
Howard Gillette
David Girasole
Joan Gmitter
Mary Goldman
Anna Goldstein
Diane Graboyes
Alan & Greta Greenberger
Susan Greene
Sally Griffith & James Pringle
Barry & Joanna Groebel
Sonya Gwak
Lynne Haden-Findlay
June L. Hament
Barbara Harris
Ann & David Harrison
Robert Haskell
Ellen Hattemer
Rob Haughey & Rosemary Malatesta
Philip Hawkins & Ronnie Kurchner-
Hawkins
Elizabeth Hawley
Martin & Cindy Heckscher
Patrice Heller & Michael Ecker

THANKS TO OUR DONORS 24

Linda Henderson
Timothy P. Herbert
Nancy & Tom Higgins
Marylu Hill
Robert Hirsh & Leslie Stone
Mr. & Mrs. Ralph S. Hirshorn
Terry Hirshorn
Morton & Joy Lois Hoffman
Esther & Bob Hornik
Caren & Stuart Hosansky
Karen C. Humbert
Wallace F. Hussong
Joe & Catherine Huston
Gail & Dennis Jackman
Katayun Jaffari
Carol Jessup
Andy Kahan
Juliette Kang
Drissle Kaplan
Patricia A. Kapur
William Katz & Jan Swenson
Leslie Kaufman
Douglas & Ruth Keating
Ed Kelly
Karen Kelly
Bill Keough
Dottie Higgins Klein
Jason Klugman
Nilmini Klur & Martin Bryant
Lorraine Kobeski
Linda Koenigsberg
Elizabeth Kozart
Garry Kramer
Mary Ellen Krober
Fred & Carol Kueppers
Virginia Kurz
Carol LaBelle
Anita Toby Lager
Corinne Lagermasini
Michael Lampson & Min-Young Kim
Brian & Deborah Landry
Eva & Michael Leeds
Robin L. Leidner
Bea & Norman Leopold
Carol Levin

Caryl Levin
Judd K. Levingston
Michael L. Levitan
Natalie Levkovich & Richard
Nalbandian
Lawrence Lindsay & Carla Puppin
William A. Loeb
Cirel & Howard Magen
Donald W. Maloney, MD
Alice & Richard Mandel
Colleen W. Marano
Karen Mauch & Diane Zilka
Christina McCawley
Scott A. McCreary
John McFadden & Lisa Kabnick
Kevin & Ellen McMahan
Donald & Joan Mechlin
Francis Melvin
Mark Mendenhall & Nancy Shickler
Richard & Elizabeth Mentzinger
Kenneth B. Mertz
Claire Meyer
Stephen Meyer, in memory of Florence
Dr. Mary Ann Meyers
Donna & Steve Millen
Victor & Jane E. Miloradovich
Meredith Mitchell & James McAloon
William Mitchell
Josh Mitteldorf
Padmini Mongia
Jane Moore
Stephanie Morris
Dennis & Katherine Moss
Sheila Murnaghan & Hugh Gordon
Pamela Nelson
Cory F. Newman
Paul Newman
Eliot & Bonnie Nierman
Maja Nikolic
Danuta Nitecki
Dr. Joseph Noreika
Eileen O'Brien
Cora Olgay & Alan Rosenquist
John Otterson
Harry & Eleanor Oxman

THANKS TO OUR DONORS 25

Mr. & Mrs. Frank Paiva, Jr.
Judith Peakes
Mike & Kathy Perloff
Shelly Phillips & Theodore Tapper
Natalie Phrompeng
David B. Picker & Ann C. Trail
Stephen Platt & Robin Schaufler
Nancy Pleshko
Michael Plott & Linda Smith
Jay Pomerantz
Dr. Joel & Mrs. Bobbie Porter
James & Sally Pringle
Elizabeth Rappaport Fife & Daniel Fife
Lisa & Doug Raymond
Mary Jo Reilly
Nona Reinhart
Susan Rettig & Ken Snyder
Michèle Richman
Judith Richter
Sarah Ricks & Tom Dolgenos
Helen Rigby
Mr. & Mrs. Donald H. Roberts, Jr.
Benjamin Roerich & Ayalah Sorkin
Lewis J. Rose MD
Rosenbach Family
Hal & Sue Rosenthal
Judith & Richard Ross
Marc Ross & Katherine Conner
Mark & Marjorie Ruppel
Diane Rurode & James Lord
Kevin Russell
Myra & Mike Ryan
David & Joan Safford
Susan & Richard Salkowitz
Robin Sampson
Christos Sazeides
Carol Scatarige
Robert & Elizabeth Scheyder
Perlita & Frank Schorfheide
Brett & Carrie Schur
Bill & Sharon Schwarze
Gail Scott
Hideko Secrest
Paul & Kathleen Selbst
Divya Shah

Glenn Sickenberger
Cynthia Silber & Eric Key
JoAnn & Richard Simon
Catherine & Bill Siple
David Smith
James L. Smith
Jonne & Corey Smith
David & Jennifer Sonenshein
John Holley Spangler
Margaret R. Spencer
Gertrude Spilka & Darl Rastorfer
Catherine & Tom Stack
Nicholas Stanley
Ellen & Norman Stein
Mark Steinberger & Ann Lebowitz
Jan & Constantine Stephano
Sara Serman
Peter & Louise D. Stevens
David M. Stewart
Jim & Julianne Stokes
George Suhy
Dorota Szarlej
Mary Ann Tancredi
Charles F. Tarr & Roy Ziegler
John & Phyllis Taylor
Louis Temme & Kathryn Rosse
Claudia Tesoro & Richard Greenstein
Algot & Mary Thorell
Anne Tobey & Peter Schoenbach
Michael P. Toner
Sheila & Howard Trauger
Frank Trommler
Ellen Ufberg & Judah Labovitz
Alan Urek & Joe Salerno
Christopher & Lee van de Velde
Kathleen Vick & Stephen Stack
Colleen Walsh
Tom & Susan Walther
Tom & Julie Wamser
Gordon & Ellen Wase
Barbara Wasserman
Ken & Susan Weiss
Doris Williams
Monica & Nicholas Winter
Jacqueline Wolf

THANKS TO OUR DONORS 26

Richard Woods & Barbara Jacobsen
Woods
Lee J. Woolley
Anna Wulick & Misha Rosenbach
Roger & Lillian Youman
Gerald Zeitz
Elizabeth Zelasky & Charles Palus
Linda & Peter Zeltner
Barrie & Gene Zenone
Ben Zuckerman & Marian Robinson

MATCHING GIFT PARTNERS

AmazonSmile Foundation
Blackbaud, Inc.
Chubb Charitable Foundation
GlaxoSmithKline Foundation
IBM
The Investment Fund for Foundations
Johnson & Johnson Family of
Companies Matching Gifts Program
Merck Partnership for Giving
PayPal Giving Fund
Philadelphia Foundation
Pitney Bowes Foundation
Shell Oil Company Foundation
Matching Gifts Program
Susquehanna International Group, LLP
Vanguard Matching Gift Program

IN-KIND SUPPORT

Adobe Systems
Dana J. Ash
Eugene & Joann Bissell
Michael Brooks
Christopher Colucci
Parker Cunneen
Duane Morris LLP
Stacy Maria Dutton
EY
Flying Fish Brewing Company
Fox Rothschild LLP
Hal Jones & Clarissa Carnell
I-SITE
J'aime French Bakery
Keystone Homebrew
Gregory Kleiber & Harriet Ravdin
Charles McMahan
Microsoft Corporation
Anne Shuff
Stradley Ronon
The Sweet Life Bakeshop
Tiffany's Bakery
University of Pennsylvania Office of
Government and Community Affairs
Rebecca Williams

If your name has been misprinted, please accept our deepest apologies and notify Emily Wilson at ewilson@lanterntheater.org or 215.829.9002 x203.

MAKE A GIFT!

Your support is crucial to the Lantern's artistic and education mission - and to ensure that we remain strong as we develop new ways to safely create and deliver great theater to you, our audiences, and to our residency schools during this unusual season. For more information or to make a tax-deductible gift, please contact Emily Wilson at 215.829.9002 x203 or visit us online at lanterntheater.org/support. Thank you for your support.

THANKS TO OUR DONORS 27

A special thank you...

Special thanks to all of you who generously donated the value of your *Othello* and *The Misanthrope* tickets back to the Lantern this past spring. We are so grateful for your support, and we can't wait to see you in person at St. Stephen's Theater when it is safe to gather.

Howard Aaronson
Maureen Adams
Reid Addis
Kim Adler
Jacqueline Akins
Gary Albright
Nan Alderson
Ann Aldrich
Carol Aliano
Diana Altegoer
Susan Altschuler
Frederick Andersen
Betsy Anderson & David
Sullivan
Nathan Anderson
Alan Ankeny
Irene Anthony
Veronica Aplenc
Debra Appel
Marcia Arch
Richard Arhart
Philip Rakita & Elizabeth
Armour
Kay Armstrong
Carol Aronoff
Theodore & Barbara Aronson
Nancy Aronson
Dana & Melissa Ash
Judith Assenheimer
Elsa Atson
John Attanasio
John Auld
Charles Ault & Barbara Cohen
John Austin & Madeline Magee
Rosemary Auth & David
Rudovsky
Ann Bacon
Camille Bacon-Smith
Jessica Bady
Ellen Baer
Eileen Baird
Sylva Baker
Regina Bannan
Katherine & Paul Barnes
Bonnie Barnett
Daniel Barron
Barbara Bassett
Carolyn & George Bassett
Patricia Bassman

Sheila & Myron Bassman
Jason Batcho
Mary Bates
Robert Bauer & Sandy Clay
Bauer
Anna Baumgaertel
Rebecca Baxter
Tom & Carol Beam
Jane Beatty
Kathleen Beaver
Sylvia Beck
Marilyn Becker
Frances & Fred Beckley
Priscilla Becroft
Joshua Beeman
Sheila Bell
Ada Bello
Frances Bennett
Ann Berenson
Marie Bergbauer
Timothy Berger
Howard Berinson
Jay & Nancy Berkowitz
Mitchell Berlin
Richard & Constance Berman
Shirley Biele
Max Bier
Edward Bierman
Anita & Ron Bihovsky
Jeffrey & Lynda Billheimer
George & Jane Bingham
Andrea Biondo & Kenneth
Hartzell
Gail & Thomas Bisio
Eugene & Joann Bissell
Duncan Black
Barbara Blake
Michael Blaustein
Andrew Blittman
Marilyn & Stacy Block
Andrea Blum
Angela Boatright-Spencer
Ernest Bollin, Jr.
Allen Bonner
Marcia Boraas
Ruth Boss
Daryl Boudreaux & Carol
Drazen
Art Bourgeau

Heidi Bowman
Steven & Cynthia Boyd
Laslo Boyd
Daniel Boylen
Jeffrey Braff
Neil Brandt
Lauren Bray
Edward Breen
Talmage Brennan
Amy Brodkey
Jean Brody & Louis Schwartz
Barbara Bromfield
Barbara Bronczyk
Michael Brooks
Ellen & Albert Brown
Barbara J. Brown
Regina Brown
Shirley Brown
Victoria Brown
John Bryan & Nancy Winkler
Anmiryam Budner & Martin
Philips
Mark & Cecile Burgert
Polly Burlinghan
Loretta Burn
Kathleen Burns
Camille Burstin
Katherine Butler
Bruce & Barbara Byrne
Mary Ellen Byrne
Josephine Calabretta
Carolyn Cambor
Pauline Candaux & Solomon
Katz
Jay Caplan
David Capozzi
Lawrence Carlin
Charles & Elizabeth Carmalt
Tom & Sue Carroll
Frances Carter
John Caskey
Lee & Susan Cassanelli
Carol & Bruce Caswell
Michael & Clairellen Catalano-
Johnson
Meghan Cauffield
Ralph Cavalli
Marissa Cecil
Heddy Cerwinka

THANKS TO OUR DONORS 28

George Chalmers
Laurie Chamlin
Kathleen Chase
Leslie Cheeseman
Orin & Carrie Chein
Anthony Chiesa
Joel & Joan Chinitz
Paul Chrystie
Rosemary Clark
Liliane Clever
Joan I. Coale
Jennifer Coburn
Craig Cohen
Howard & Barbara Cohen
Joan Cohen
Marc Cohen
Milton Cohen & Elise Bromberg
Gary Cohn
Clare Coleman
Gregory Coleman
John & Susan Lavine Coleman
Fran Collins
Susan Conboy
Michael & Constance Cone
Peter Conn
Blake Conroy
Karen Consalvi
James Conway
Joanne Conway
Susan Conway
Carol Cook
Cynthia Cooke & Beth Anne
Spanninger
John Cooke
Jeffrey Cooper & Nancy Klaus
Margaret Cooper
Robin Cooper
Martha Cornog
Anita Corriveau
Douglas & Laurel Costa
Mary Cotter
Gretchen & Matthew Cowell
William Creelman
Andy & Irene Crichton
Grazina Crisman
Paige Cronlund
Suzanne & Carl Cross
Barbara Culbert
John & Fern Culhane
Carol Cunningham
Helen Cunningham
Daniel Dagle
Susan Dahl
Dorothy J. Dalton
Kathie Dalzell
Neal D'Amato
Joseph & Helen D'Angelo
Michael & Ann D'Antonio
Bruce Davidson

Elva Davis
Steven Davison
Roseann de Freitas
Julian & Lori DeMillo
Diane Del Colombo
Peter Delaney
Ann DeLaura
Cordelia & Don Delson
Doina Denes
Robert Dever
Steven Devlin
David DeVoe & Laura Lane
Gene Dilks
Frederick & Lynne Dillman
Elizabeth Dillon
Cheryl Dobleske
Olena Roma Dockhorn
Bill & Denise Donahue
Thomas & Theresa Donahue
Diane Donato
Deborah Dorfman
Charles Dorsett
Sherida Douglass
Steven Dowinsky
Arlene Dowshen
John & Lois Durso
Lauren Dussault
Ilene Dyller
KIPP Dubois Collegiate
Academy
Keith Eckert
Bruce Edelman
Michael Edelman
Dwight & Jennifer Edwards
McIver Edwards
Henl Eggles
David Elesh
Elaine Ellison
Andrea Elwork
Mary Lee Ely
Gary Emmett, MD & Marianne
Ruby, MD
Audrey Escoll
Evelyn Eskin
Constance Evans
Lois Evans
Helen Evelev
Gregory Falter
Jeffrey Farenback-Brateman
Lynne Farrington
Gilbert Feinberg & Nadeen Van
Tuyle
Helen Feinberg
Vickie Fenton
Adrienne Feuer
Barbara Fick
Vivian Figueredo
Gloria Finkle
MJ Fischer

John & Nancy Fischer
Mary Fish
Lee Fishman
Roberta Fiske
CJ Fitts
Marie Flaherty
Maureen Flanagan
Oliver & Monica Flint
Laura Flippin
Joanne & Kenneth Ford
Juliet Forster
Dieter & Sara Forster
Elizabeth Fox
Laura Frank
Alan & Mary Frankel
Jimmy Frazier
Sally & Mark Frazza
Tema Freed
Sergio Freire
John Fried
Steven & Ellen Friedell
Donald M. Friedman, MD
Philip Friedman
Martin & Sheri Friedman
Richard Fritzson
Paula Fuchsberg
Ivan Fuller
Ann Funge
Heather Furlin
William & Dorothy Gaboda
C.E. & Kelly Galfand
Joseph Gallo & Edward Moon
Marcia & Gary Garb
Kimberly Gardine
Joel Gardner
Judith Garfinkel
Laurence Gavin
Larry Gelfand
Wallace Genser
Judi & Joel Gerstl
Nancy Geryk
Eleanor Gesensway
William Giambrone
David & Susan Giffen
Seamus Gilchrist
Ken Gilfillan & Steve Lore
Frances & John Gilmore
Judith Ginsberg
Andrew Giorgi
Frank Giorgilli
Eduardo Glandt & George
Ritchie
Cheryl Glasgow
Deborah Glass
Joan Gmitter
Jay & Maxine Goldberg
Stephen Goldberg
Robin Goldfedder
Marcia Goldstein

THANKS TO OUR DONORS 29

Marjorie Goldstein
Barry Gomolka
Libby Goodman
Doug & Peggy Gordon
Thelma Gosfield
Kathy Gosliner & Joseph Lurie
Phyllis Gottlieb
Marie Gottschalk
Penina Gould
Barbara Grabias
Charles & Alison Graham
Hans Greenberg & Sheryl
Shapiro
Mark & Vivian Greenberg
Nancy Greenberg
Phyllis Greenfogel
Judy Greenwood-Ulan
Sally Griffith & James Pringle
Susan Grossinger & Keith
Forsyth
Sally Groverman
Toby Grubman
Mary Gunn
Alan Gutwein-Guenther
Linda Gutzait
Laurent Guy & Pamela Duke
Sung Youn Gwak
Bill & Debbie Haggett
Linda Hahn
Monica Hahn
Michael Hairston & Dan
Rothermel
Janet Hallahan
Curt & Dona Haltiwanger
Stephen & Ona Hamilton
Thomas Hanko
Grace Hanrahan
John & Susan Hansen-Flaschen
Stephen Harlen
Evlynne Harmon
Hugh Hart
Charles & Lorrie Hart
Palmer & Judith Hartl
Gretchen Hartling
Dr. Erum & Helge Hartung
Anderson & Theresa Hartzell
Robert Haskell
Donald Hatfield
Robert Haughey & Rosemary
Malatesta
Carol Hauptfuhrer
Gail & Henry Hauptfuhrer
Catherine Hawkes
Lynne Hayden-Findlay
Sharon Haynie
Andrew & Laura Hazeltine
Charles W. Head, Jr.
Diane Hedrich
George Heidemark

Janice Heinold
Maureen Heisinger
Charlotte Heller
Ned Heltzer & Nancy Feld
Jane Henderson
Thomas Herninko
Ann Herrmann-Sauer
Barton & Batame Hertzbach
Robert Heuckeroth
Nancy & Tom Higgins
Priscilla Hillyer
Robert & Leslie Stone Hirsh
Terry Hirshorn
Myra Hochman
Bettina Hoerlin & Gino Segre
Jackie Hoffman
Eric & Jennifer Hoheisel
Bonny Hohenberger
Josephine Holz
Clifton Hood
Martin Horden
Jill Newirth Horn
Esther & Bob Hornik
I. Gail Howard
Josephine Howe
Michael J. Hozik & Margaret L.
Rea
Lynda Hubbell & Paul Hummer
Charlotte Humenuk
Richard Hurd
Judith & Richard Hurtig
Joe & Catherine Huston
Kenneth Hutchins
Ann & Steven Hutton
Kianna Hvostal
Stephen Imbriglia
Carmela Infanti
Natalie Ingoglia
Jeffery Ishibashi
Fred Jackes & Judy Adamson
Gail & Dennis Jackman
Christine Jacobs
Kenneth Jacobs
Marc Jacobs
Tamar Jacobson
Ed Jakmauh & Joan
Countryman
Hugh & Sandra Janney
Karl Janowitz & Amy Goldman
William & Nancy Jantsch
Joyce Jefferis
Kathleen Jesiolowski
Cameron Johnson
Peter Johnson & Nora Hunt-
Johnson
Richard Johnson & Marsha
Freedman
Carol & Kent Jurin
Gina Kaiser

Ronald & Rachelle Kaiserman
Laura Kait-Petersen
Patricia & Paul Kalata
Betsy Kalish
David Kalmansohn
Bernard & Paige Kaplan
Nancy Kaplen
Nazim Karaca & Katya Roelse
Deborah & Bruce Kasten
Nicole Katowitz
William Katz & Jan Swenson
John Kearney
Elizabeth Keech
Mary Emma Keene
Michael Kelly
Carol & Donald Kennedy
Kathryn Kenney
Barbara Kessler
Bruce Kiesel & Marie McVeigh
Patricia & Steven King
Lisa Kirschenbaum
Andrea Kirsh & Andrew
Morrogh
Nancy Kirsh
Barry Klaymen
Gregory Kleiber & Harriet
Ravdin
Carol Klein
Florence Klein
Rita Klinger
Ken & Eve Klothen
Nilmini Klur & Martin Bryant
Nancy Kneeland
Cheryl Knoell
Harold & Maris Kobb
Lorraine Kobeski
Linda Koenigsberg
Leonard Kolins & Faye
Goldman
C. Korman
Cecilia Korman
Henry Kowaleski
Deborah Krabbendam
Jacqueline Kraeutler
Karen Kreider
Isaak & Evonne Kruger
Katherine Kurtz
Virginia Kurz
Harry & Stacy LaBelle
Catherine LaFarge
Anita Lager
David LaGrega & Kristin
Peresta
Daniel Lai
Ruth & Peter Laibson
Craig & Monique Laird
Diane Laison
Nicole & Christopher LaMonaca

THANKS TO OUR DONORS 30

Ron Lane & Raquel Benabe-
Lane
Joyce Laskin
Jennifer Lauby
Kenneth Laughlin
Keith Layton
Robin Lebow
Anne & Wynn Lee
Joyce & Stephen Leftly
Paula & Thomas Legere
Stefanie Leibovitz
Georgeann Lenard
Susan Leontiades
Michael Levitan
Rafael Levites
Natalie Levkovich & Richard
Nalbandian
Joanne Levy
Alison Williams Lewin
Lillian M. Li
Norman & Sylvia Lieberman
Maria Ligos
Margaret Lindem
Lawrence Lindsay & Carla
Puppin
Fred Linge
Cheryl Lockerby
Joseph Loewenberg
Linda Loftin
Margaret Lonzetta
Jairo Lora
Margaret Lord
Sandra Lown
Kathleen Lubienski
Niki Ludt
Elizabeth Lukens
George & Mary Lou Lympers
Bruce MacGregor
Margaret MacKenzie
William Madonia
Paul Makurath
Albert Malmfelt & Brenda
Frank
Donald Maloney, MD
Marie Maly
Robin Mama
Joseph Manko
Kyle Manning
Marsha Manns
Florence Marcus
Gail Marcus
Martha Marcus
David & Linda Marder
Katherine Margo
Susan Markley
Denise Marx
Mary E. Marzullo
Nedda Massar
Betty Matarese

Lynn Mather
Edward Mattis
Karen Mauch & Diane Zilka
Arlene Mayeski
Rosemary McBride
John McClafferty & Richard
Weeks
Larry McClain
Sharon McConnell-Sidorick
Jim McClelland & Lynn Miller
Betsy McCoubrey
Denise McDaid
Priscilla McDougal
Miles & Barbara Axelrod
McFarland
Kathleen McGettigan
Joseph McGinn
Jim McGorman
John & Suzanne McGowan
Joseph McGuire & Wilma Rossi
Pat McInerney
Marina McLaughlin
Robert McLaughlin
Helen & Charles McMahan
Joan McNamara
Duncan McNiff
Jean McWilliams
Connie Meehan
Nancy Megley
Arthur Meisch
Stephen Meister
Francis Melvin
Mark Mendenhall & Nancy
Shickler
Elizabeth & Richard Mentzinger
Kenneth B. Mertz
Claire Meyer
Joshua & Norma Meyer
Joyce Meyers
Mary Ann Meyers
Amy Michael
Madelyn & Victor Mignatti
Joe Mikuliak
Barbara Miller
Carol Lane Miller
Naomi Miller
David Milley
Kristin Minot
Scott Mintzer
Peter Miraglia
Claire Mitchell
Meredith Mitchell & James
McAloon
Ross L. Mitchell
John & Laraine Mocenigo
Padmini Mongia
Margaret Moran
Peggy Morgan
Stephanie Morriss

Penny Moser
Margo & Douglas Moses
Katherine & Dennis Moss
Mary Mullarkey
Susan Muller
William Mulroy
John Murphy
Barbara Murray
Ellen Mutari
Carolyn Naaman
Robin Nagele
Stephanie & Michael Naidoff
Leonard Nakamura & Myra
Leyorsek
Mary Namiotka
Judy Nathanson
Mara Natkins & Jerry Fagliano
Barbara Nelson
Pamela Nelson
Claiborne Newlin
George Niedermayer
Eliot & Bonnie Nierman
Diane Nissen
Ann & George Nista
Danuta Nitecki
Michael & Jennifer Nolan
Marta Nolan-Alley
John & Margaretta Noonan
Joseph Noreika
Elizabeth Nork
Joe Norton
Frances Novack
Eileen O'Brien
Joe O'Bryan
Michael Ochs & Erica Golemis
Nora Odendahl
Barbara Oldenhoff
Judith O'Leary
Sheila Oliver
Peter Olson
Lynn & David Oppenheim
Ann L. O'Sullivan
John R. Ottorholm
Kimberly Oxholm
Eleanor Oxman
Thomas & Karin Pajak
Antonis Papadourakis
Catherine Pappas
Zoe Pappas
Maureen Parris
Lance & Virginia Parry
Bonnie Pastman
Alan Paston
Judy & Michael Paul
Jean Pavela
Clifford Pearlman & Lynn Marks
Bruce Pearson
Paul Pedlow & Maureen
Keppard-Pedlow

THANKS TO OUR DONORS 31

Steven Peitzman
Yana Pekareva
Kim Pelkey
Michael & Catherine Perez
Michael & Katherine Perloff
Steven Peterson
F. Laurence Pethick
Shelly Phillips & Theodore
Tapper, MD
Karen F. Phinney
David Picker & Ann Trail
Benjamin Pierce
David Pierson & Barrie
Trimingham
Claire & Lud Pisapia
Barbara Plumeri
John & Victoria Podolski
Joan Pollak
Jeanne Pond
Linda Porch
David Pressel
Kathryn & Michael Protenic
Maureen Pugh
Hope Punnett
Christine Quarembro
Bonnie Rabinowitch
Alexandra Radbil
Alexander & Shulamith Radin
Joanne Rafferty
Ellen Ragone
Birgit Rakel
Michael Ramage & Annette
Sussman
Erin Ramsden & Samuel Talcott
Sandra Rathman
Philip & Jennifer Rea
Jim & Siobhan Reardon
Andrea Regal
Sabine Rehm
Kristin Reigle
Mary Jo Reilly
Nona Reinhart
Ann Repplier
Rosemarie Retacco
Alex & Sofiya Reyzin
Louis Richman
Jane Rickenbach
Raymond D. Ricker
Elisa Riesenbach
John Rizzo & Barbara
Matteucci
Elizabeth Roben
Michele Roberts
Paula Roberts
Paula Robison
Edward & Geralyn Rock
Sevgi Rodan
Franklyn & Cintra Rodgers
Benjamin Roerich & Ayalah
Sorkin

Joseph J. Rogers
Ellen Rosen Rogoff
Marisa & Alejandro Roman
Ellen Rosen
Patricia Rosenberg
Hal & Sue Rosenthal
Nan Rosner
Jeffrey Rosoff
Daniel & Faye Ross
Richard & Judith Ross
Joan Rossler
Fred & Pat Rosso
Ronald & Susan Rubin
Gail Rudenstein
Gayle Ruggeri
Joan & Philip Russo
Robert Ryan
Margaret Sadler
Susan & Richard Salkowitz
Robin Sampson
Kathleen Sauder
Barbara Saverino
Cindy Savett
John & Janet Sawicki
Ernest & Linda Scatton
Susan Scauzzo
Nina Schafer
Sharon Schanzer
Suzanne Schecter
Susan Schmidt
Peter Schoenbach & Anne
Tobey
Kenneth Schoenholz
Ellie Schofield
Perlita & Frank Schorfheide
Bonnie Schorske
Diane Schott
Paul & Barbara Schraeder
Emily Schricker
Debby Schultz
Richard & Lee Schultz
Deena Schuman
Laura Schwartz
Stephen Schwartz
Deborah Schwartzman
Sharon & William Schwarze
Denise Scobee
Philip Scranton & Virginia
McIntosh
Eleanor & Elliott Seif
Lucy Bell Sellers
Lisa Semeraro
Sharon Senall
Nikki Senecal
Bohdan & Kathleen Senkow
Ruth Septee
Evan Seymour & Karen
Schermerhorn
Hass & Georgia Shafia

Judith Shahriari
Joseph Shannon
Arthur Sharon
Robert & Karen Sharrar
Marilyn Shatz
Kathleen Short
Lee & Roy Shubert
Glenn Sickenberger
Ellen Siegel
Jeanne Sigler & James Fratto
Barbara & Marc Silbert
William & Aimee Silverman
Barbara Silverstein
Anne Singer
Paulette Singleton
Victoria Skelly
Daniel Skubick
Caroline & Gary Smith
Jerry & Marilyn Smith
William & Ruth Smith
Sally Smith
Sandra & Samuel Smith
Shirley & Cecil Smith
Elizabeth Snyder
Kenneth Snyder & Susan Rettig
Phyllis Snyder
Sharon & Mark Sobel
Sara Sobel & Susan Pond
Barbara & Nathan Sonnheim
Carole Soskis
Donald & Wendy Soslow
Gail Sosnov
Heather & Logan Speirs
Herbert Sperger
Debra Speyer
Gertrude Spilka & Darl
Rastorfer
Evelyn Spritz
Catherine & Tom Stack
J. Michael & Patricia Steele
Peter L. Steffa, Jr.
Suzanne Steffen
Michael Stein
Mark Steinberger & Ann
Lebowitz
Margaret Stephens
Kathleen Stephenson
Marka Stepper
Joe & Rachel Stern
Lillian Stern
Jennifer Sternberg
Robert Stewart & Barbara
Barnett-Stewart
Jim & Julianne Stokes
Ellen Stork
Maxine Stotland
Gaynor Strickler
Marie Stuart
Dale Sturgess & Scott
McCreary

THANKS TO OUR DONORS 32

Rosemary Sweeney
Dolores Szymanski
Doug & Christine Taber
Francis Tan
Mary Ann Tancredi
Cecilia Segawa Seigle
Tannenbaum
Charles Tarr & Roy Ziegler
Joan Tartanian
John & Phyllis Taylor
Leslie Taylor
Marianne Tebbens
Louis Temme
Etheldra Templeton
Freda Terrell-Tait & Christopher
Tait
Sybil Terres Gilmar
Claudia Tesoro & Richard
Greenstein
Randy Thomas & David Kutner
Carol Thomson
Nicholas Thomson
Edward & Elizabeth Thornton
Mary Anne Timmins
Dr. & Mrs. Stephen Tint
Mary Tisera
Leona Tonik
Judy Trailer
Robert & Kathy Treftz
Teri Tremel
Peter Trentacoste & Moideh
Kevkhah
Nicholas Tulach
Ellen Ufberg
Robert Urquhart & Marsha
Lester

Linda Valentini
Scott Van Bramer
John & Christine Van Horne
Erik & Joyce Videlock
Laura Vidmar
Keith & Yvonne Vine
Stephen & Susan Vineberg
Judith Voet
Alan Vomacka
T. Wadas & C. Zetye
Barbara & James Wakefield
Pamela Walkling
Ann Wallace
Timothy Walsh
Susan & Tom Walther
Laurien Ward
Corinne Warren
Ellen & Gordon Wase
Barbara Wasserman
Rosemary Watt & Charles
Arnao
Bruce Weaver
Kathryn Webber
Leonard Weinberg & Frances
Gallun
Richard & Eileen Weinberg
Bob Weinberg & Eleanor
Wilner
Debra Weiner
Stephen & Rosalyn Weinstein
Ferne Welch
Wayne Welsh
Lee Wentz
Lizanne Wentz
Theodora West
Wayde & Cynthia Weston

James & Jenette Wheeler
Sandra Whipple
Barclay Whitaker
Carla White
Deborah White
Mindy Widman
David Wierz
Linda Wiesinger
Julia Williams
Virginia Williams
David Wilson
Jean & John Witmer
Linda Witt
Jacqueline Wolf
Ted & Stevie Wolf
David Wolfe
Edward Wolfe & Francis
Mitchell
Judith & Stanley Woloff
Richard Woods & Barbara
Jacobsen Woods
Barbara Wright
Joseph Wrightson
Jessica Xapakdy
Danielle Yermish
Roger & Lillian Youman
Caroline Young
Lowell Young
Jean & Joel Yudin
William Ziegler
Michael Zuckerman



Charlotte Northeast
and Adam Hammet



Anthony Lawton and
Jered McLenigan



Claire Inie-Richards
and Ben Dibble